

For Research Use Only

# LRRC32 Polyclonal antibody

Catalog Number: 26021-1-AP

1 Publications



## Basic Information

<b>Catalog Number:</b> 26021-1-AP	<b>GenBank Accession Number:</b> BC070079	<b>Purification Method:</b> Antigen affinity purification
<b>Size:</b> 150ul , Concentration: 650 ug/ml by Nanodrop and 333 ug/ml by Bradford method using BSA as the standard;	<b>GeneID (NCBI):</b> 2615	<b>Recommended Dilutions:</b> WB 1:200-1:1000 IHC 1:50-1:500
<b>Source:</b> Rabbit	<b>UNIPROT ID:</b> Q14392	
<b>Isotype:</b> IgG	<b>Full Name:</b> leucine rich repeat containing 32	
<b>Immunogen Catalog Number:</b> AG23423	<b>Calculated MW:</b> 72 kDa	
	<b>Observed MW:</b> 80 kDa	

## Applications

<b>Tested Applications:</b> WB, IHC, ELISA	<b>Positive Controls:</b> WB : HUVEC cells, IHC : human tonsillitis tissue, mouse spleen tissue
<b>Cited Applications:</b> WB	
<b>Species Specificity:</b> human, mouse	
<b>Cited Species:</b> mouse	
<b>Note-IHC: suggested antigen retrieval with TE buffer pH 9.0; (*) Alternatively, antigen retrieval may be performed with citrate buffer pH 6.0</b>	

## Background Information

LRRC32, also known as GARP, is a transmembrane protein of 662 amino acids, the extracellular portion of which contains 20 leucine-rich repeats (PMID: 8180135). LRRC32 is a cell surface receptor on regulatory T-lymphocytes (Treg cells), platelets, hepatic stellate cells and certain cancer cells (PMID: 27054568). It has been demonstrated as a Treg-specific activation marker (PMID: 20137067). LRRC32 is critical for the surface expression of latent TGF- $\beta$  by binding to the complex and functioning as its cell surface receptor (PMID: 19651619).

## Notable Publications

Author	Pubmed ID	Journal	Application
Qimeng Shi	39252968	iScience	WB

## Storage

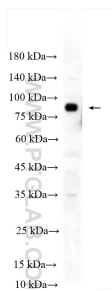
**Storage:**  
Store at -20°C. Stable for one year after shipment.  
**Storage Buffer:**  
PBS with 0.02% sodium azide and 50% glycerol pH 7.3.  
Aliquoting is unnecessary for -20°C storage

\*\*\* 20ul sizes contain 0.1% BSA

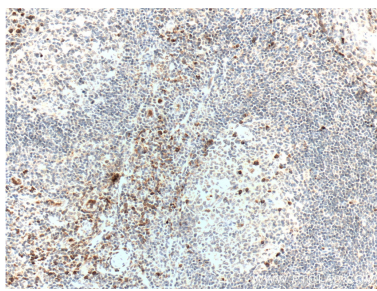
For technical support and original validation data for this product please contact:  
T: 1 (888) 4PTGLAB (1-888-478-4522) (toll free in USA), or 1(312) 455-8498 (outside USA)  
E: [proteintech@ptglab.com](mailto:proteintech@ptglab.com)  
W: [ptglab.com](http://ptglab.com)

This product is exclusively available under Proteintech Group brand and is not available to purchase from any other manufacturer.

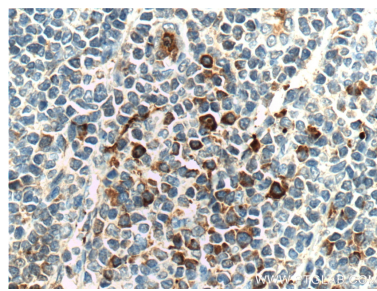
## Selected Validation Data



HUVEC cells were subjected to SDS PAGE followed by western blot with 26021-1-AP (LRRC32 antibody) at dilution of 1:300 incubated at room temperature for 1.5 hours.



Immunohistochemical analysis of paraffin-embedded human tonsillitis tissue slide using 26021-1-AP (LRRC32 Antibody) at dilution of 1:200 (under 10x lens). Heat mediated antigen retrieval with Tris-EDTA buffer (pH 9.0).



Immunohistochemical analysis of paraffin-embedded human tonsillitis tissue slide using 26021-1-AP (LRRC32 Antibody) at dilution of 1:200 (under 40x lens). Heat mediated antigen retrieval with Tris-EDTA buffer (pH 9.0).