

For Research Use Only

C10orf88 Polyclonal antibody

Catalog Number: 26026-1-AP



Basic Information

Catalog Number:

26026-1-AP

Size:

150ul, Concentration: 450 ug/ml by Nanodrop;

Source:

Rabbit

Isotype:

IgG

Immunogen Catalog Number:

AG22971

GenBank Accession Number:

BC032645

GeneID (NCBI):

80007

UNIPROT ID:

Q9H8K7

Full Name:

chromosome 10 open reading frame 88

Calculated MW:

445 aa, 49 kDa

Observed MW:

49 kDa

Purification Method:

Antigen affinity purification

Recommended Dilutions:

IP: 0.5-4.0 ug for 1.0-3.0 mg of total protein lysate

IF/ICC: 1:50-1:500

Applications

Tested Applications:

IF/ICC, IP, ELISA

Species Specificity:

human

Positive Controls:

IP: HEK-293 cells, SH-SY5Y cells

IF/ICC: A549 cells,

Background Information

C10orf88 (Chromosome 10 Open Reading Frame 88) is a mitochondria-localized protein that is thought to be associated with protein-binding activity of mitochondria and plays a role in mitochondrial dysfunction and metabolic diseases. Studies suggest that C10orf88 may be involved in cellular metabolism, cell cycle regulation, and maintenance of mitochondrial homeostasis. Its activity is closely related to ATP synthesis and oxidative phosphorylation in mitochondria, and may be affected by a variety of metabolic regulators (e.g., metformin, AICAR) and cell cycle regulators (e.g., roscovitine). In addition, inhibitors of C10orf88 (e.g., oryzanamycin, rotenone) modulate its activity by affecting ATP synthase and electron transport chain complex I in mitochondria.

Storage

Storage:

Store at -20°C. Stable for one year after shipment.

Storage Buffer:

PBS with 0.02% sodium azide and 50% glycerol, pH7.3

Aliquoting is unnecessary for -20°C storage

*** 20ul sizes contain 0.1% BSA

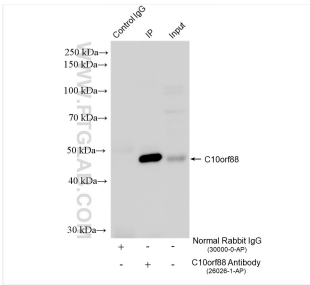
For technical support and original validation data for this product please contact:

T: 1 (888) 4PTGLAB (1-888-478-4522) (toll free in USA), or 1(312) 455-8498 (outside USA)

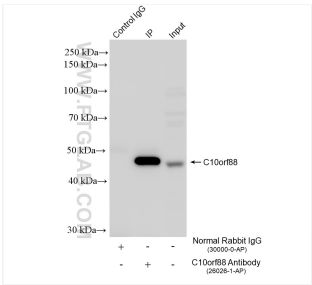
E: proteintech@ptglab.com
W: ptglab.com

This product is exclusively available under Proteintech Group brand and is not available to purchase from any other manufacturer.

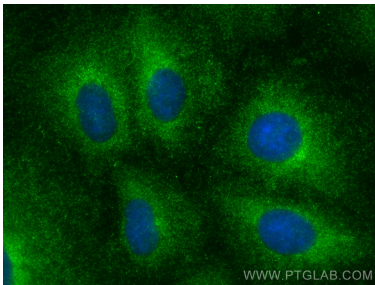
Selected Validation Data



IP result of anti-C10orf88 (IP:26026-1-AP, 4ug; Detection:26026-1-AP 1:600) with SH-SY5Y cells lysate 1920 ug.



IP result of anti-C10orf88 (IP:26026-1-AP, 4ug; Detection:26026-1-AP 1:600) with HEK-293 cells lysate 1600 ug.



Immunofluorescent analysis of (-20°C Methanol) fixed A549 cells using C10orf88 antibody (26026-1-AP) at dilution of 1:200 and CoraLite®488-Conjugated Goat Anti-Rabbit IgG(H+L) (SA00013-2).