

For Research Use Only

C10orf88 Polyclonal antibody, PBS Only

Catalog Number: 26026-1-PBS



Basic Information

Catalog Number: 26026-1-PBS	GenBank Accession Number: BC032645	Purification Method: Antigen affinity purification
Size: 100ug, Concentration: 1 mg/ml by Nanodrop;	GeneID (NCBI): 80007	
Source: Rabbit	UNIPROT ID: Q9H8K7	
Isotype: IgG	Full Name: chromosome 10 open reading frame 88	
Immunogen Catalog Number: AG22971	Calculated MW: 445 aa, 49 kDa	
	Observed MW: 49 kDa	

Applications

Tested Applications:
IHC, IF/ICC, IP, Indirect ELISA

Species Specificity:
human, rat

Background Information

C10orf88 (Chromosome 10 Open Reading Frame 88) is a mitochondria-localized protein that is thought to be associated with protein-binding activity of mitochondria and plays a role in mitochondrial dysfunction and metabolic diseases. Studies suggest that C10orf88 may be involved in cellular metabolism, cell cycle regulation, and maintenance of mitochondrial homeostasis. Its activity is closely related to ATP synthesis and oxidative phosphorylation in mitochondria, and may be affected by a variety of metabolic regulators (e.g., metformin, AICAR) and cell cycle regulators (e.g., rosavetine). In addition, inhibitors of C10orf88 (e.g., oryzanamycin, rotenone) modulate its activity by affecting ATP synthase and electron transport chain complex I in mitochondria.

Storage

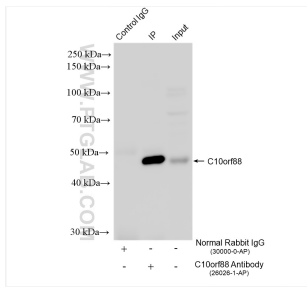
Storage:
Store at -80°C.

Storage Buffer:
PBS only, pH7.3

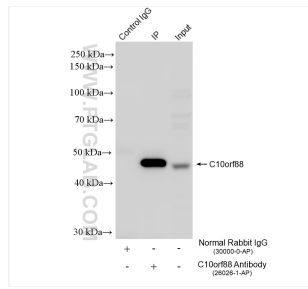
For technical support and original validation data for this product please contact:
T: 1 (888) 4PTGLAB (1-888-478-4522) (toll free in USA), or 1(312) 455-8498 (outside USA) E: proteintech@ptglab.com
W: ptglab.com

This product is exclusively available under Proteintech Group brand and is not available to purchase from any other manufacturer.

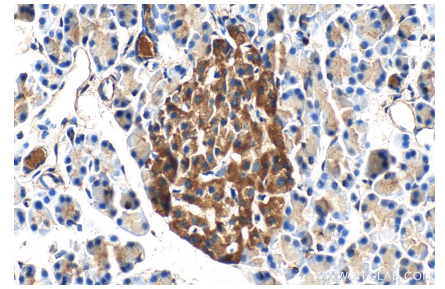
Selected Validation Data



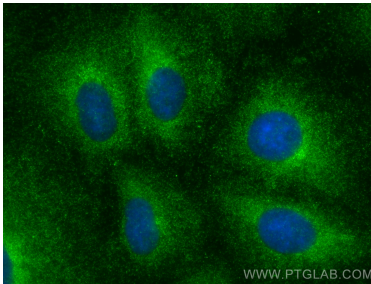
IP result of anti-C10orf88 (IP:26026-1-AP, 4ug; Detection:26026-1-AP 1:600) with SH-SY5Y cells lysate 1920 ug. This data was developed using the same antibody clone with 26026-1-PBS in a different storage buffer formulation.



IP result of anti-C10orf88 (IP:26026-1-AP, 4ug; Detection:26026-1-AP 1:600) with HEK-293 cells lysate 1600 ug. This data was developed using the same antibody clone with 26026-1-PBS in a different storage buffer formulation.



Immunohistochemical analysis of paraffin-embedded rat pancreas tissue slide using 26026-1-AP (C10orf88 antibody) at dilution of 1:200 (under 40x lens). Heat mediated antigen retrieval with Tris-EDTA buffer (pH 9.0). This data was developed using the same antibody clone with 26026-1-PBS in a different storage buffer formulation.



Immunofluorescent analysis of (-20°C Methanol) fixed A549 cells using C10orf88 antibody (26026-1-AP) at dilution of 1:200 and CoraLite®488-Conjugated Goat Anti-Rabbit IgG(H+L) (SA00013-2). This data was developed using the same antibody clone with 26026-1-PBS in a different storage buffer formulation.