

For Research Use Only

C20orf20 Polyclonal antibody, PBS Only

Catalog Number: 26040-1-PBS

Featured Product



Basic Information

Catalog Number:

26040-1-PBS

Size:

100ug, Concentration: 1 mg/ml by Nanodrop;

Source:

Rabbit

Isotype:

IgG

Immunogen Catalog Number:

AG22840

GenBank Accession Number:

BC014235

GeneID (NCBI):

55257

UNIPROT ID:

Q9NV56

Full Name:

chromosome 20 open reading frame 20

Calculated MW:

204 aa, 22 kDa

Observed MW:

30 kDa

Purification Method:

Antigen affinity purification

Applications

Tested Applications:

WB, IHC, IF/ICC, IP, Indirect ELISA

Species Specificity:

human, mouse

Background Information

C20orf20, also named as MRG/MORF4L-binding protein or Up-regulated in colon cancer 4 (Uccc4), is a 204 amino acid protein, which belongs to the EAF7 family. C20orf20 localizes in the nucleus and is a Component of the NuA4 histone acetyltransferase (HAT) complex which is involved in transcriptional activation of select genes principally by acetylation of nucleosomal histones H4 and H2A. This modification may both alter nucleosome - DNA interactions and promote interaction of the modified histones with other proteins which positively regulate transcription. This complex may be required for the activation of transcriptional programs associated with oncogene and proto-oncogene mediated growth induction, tumor suppressor mediated growth arrest and replicative senescence, apoptosis, and DNA repair. C20orf20 is modified through phosphorylation and acetylation, so the molecular weight of C20orf20 might be 25-30 kDa.

Storage

Storage:

Store at -80°C.

Storage Buffer:

PBS only, pH7.3

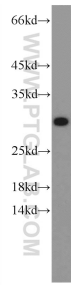
For technical support and original validation data for this product please contact:

T: 1 (888) 4PTGLAB (1-888-478-4522) (toll free in USA), or 1(312) 455-8498 (outside USA)

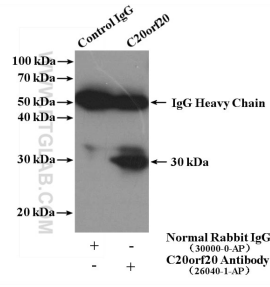
E: proteintech@ptglab.com
W: ptglab.com

This product is exclusively available under Proteintech Group brand and is not available to purchase from any other manufacturer.

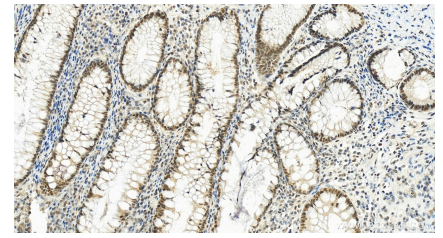
Selected Validation Data



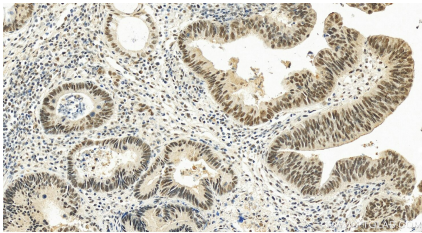
HepG2 cells were subjected to SDS PAGE followed by western blot with 26040-1-AP (C20orf20 Antibody) at dilution of 1:600 incubated at room temperature for 1.5 hours. This data was developed using the same antibody clone with 26040-1-PBS in a different storage buffer formulation.



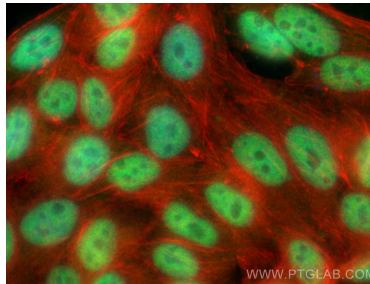
IP result of anti-C20orf20 (IP:26040-1-AP, 4 μ g; Detection:26040-1-AP 1:300) with HepG2 cells lysate 2640 μ g. This data was developed using the same antibody clone with 26040-1-PBS in a different storage buffer formulation.



Immunohistochemical analysis of paraffin-embedded human colon cancer tissue slide using 26040-1-AP (C20orf20 antibody) at dilution of 1:1000 (under 20 \times lens). Heat mediated antigen retrieval with Tris-EDTA buffer (pH 9.0). This data was developed using the same antibody clone with 26040-1-PBS in a different storage buffer formulation.



Immunohistochemical analysis of paraffin-embedded human colon cancer tissue slide using 26040-1-AP (C20orf20 antibody) at dilution of 1:1000 (under 20 \times lens). Heat mediated antigen retrieval with Tris-EDTA buffer (pH 9.0). This data was developed using the same antibody clone with 26040-1-PBS in a different storage buffer formulation.



Immunofluorescent analysis of (4% PFA) fixed HepG2 cells using C20orf20 antibody (26040-1-AP) at dilution of 1:400 and Coralite@488-Conjugated Goat Anti-Rabbit IgG(H+L) (SA00013-2), CL594-phalloidin (red). This data was developed using the same antibody clone with 26040-1-PBS in a different storage buffer formulation.