

For Research Use Only

IGSF2 Polyclonal antibody

Catalog Number: 26047-1-AP **1 Publications**



Basic Information

Catalog Number: 26047-1-AP	GenBank Accession Number: BC136484	Purification Method: Antigen affinity purification
Size: 150ul , Concentration: 320 µg/ml by Bradford method using BSA as the standard;	GeneID (NCBI): 9398	Recommended Dilutions: WB 1:1000-1:5000 IHC 1:50-1:500 IF 1:50-1:500
Source: Rabbit	Full Name: immunoglobulin superfamily, member 2	
Isotype: IgG	Observed MW: 115 kDa	
Immunogen Catalog Number: AG23297		

Applications

Tested Applications: FC, IF, IHC, WB, ELISA	Positive Controls: WB : HCT 116 cells, RAW 264.7 cells, Jurkat cells IHC : human placenta tissue, IF : RAW 264.7 cells,
Cited Applications: IF	
Species Specificity: human, mouse	
Cited Species: human	
Note-IHC: suggested antigen retrieval with TE buffer pH 9.0; (*) Alternatively, antigen retrieval may be performed with citrate buffer pH 6.0	

Background Information

IGSF2, also known as CD101, is a low abundance protein. Expression of CD101 is found on monocytes, granulocytes and dendritic cells. In addition expression on T lymphocytes is important for cell activation. It plays a role as inhibitor of T-cells proliferation induced by CD3 and inhibits expression of IL2RA on activated T-cells and secretion of IL2. This antibody specifically recognises the 115 kDa protein.

Notable Publications

Author	Pubmed ID	Journal	Application
Yuyang Liu	35350788	Front Immunol	IF

Storage

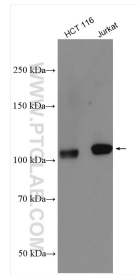
Storage:
Store at -20°C. Stable for one year after shipment.
Storage Buffer:
PBS with 0.02% sodium azide and 50% glycerol pH 7.3.
Aliquoting is unnecessary for -20°C storage

*** 20ul sizes contain 0.1% BSA

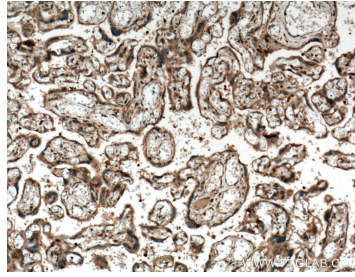
For technical support and original validation data for this product please contact:
T: 1 (888) 4PTGLAB (1-888-478-4522) (toll free in USA), or 1(312) 455-8498 (outside USA)
E: proteintech@ptglab.com
W: ptglab.com

This product is exclusively available under Proteintech Group brand and is not available to purchase from any other manufacturer.

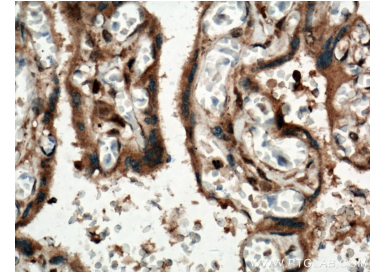
Selected Validation Data



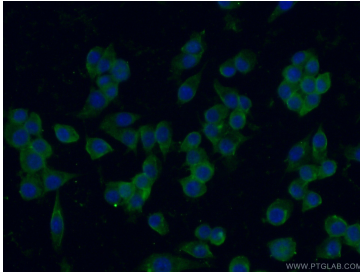
Various lysates were subjected to SDS PAGE followed by western blot with 26047-1-AP (IGSF2 antibody) at dilution of 1:2500 incubated at room temperature for 1.5 hours.



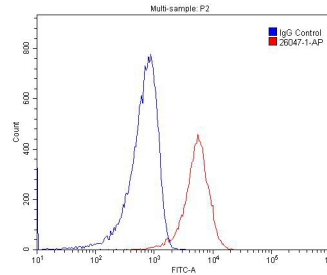
Immunohistochemical analysis of paraffin-embedded human placenta tissue slide using 26047-1-AP (IGSF2 antibody) at dilution of 1:200 (under 10x lens. Heat mediated antigen retrieval with Tris-EDTA buffer (pH 9.0).



Immunohistochemical analysis of paraffin-embedded human placenta tissue slide using 26047-1-AP (IGSF2 antibody) at dilution of 1:200 (under 40x lens. Heat mediated antigen retrieval with Tris-EDTA buffer (pH 9.0).



Immunofluorescent analysis of (-20°C Ethanol) fixed RAW 264.7 cells using 26047-1-AP (IGSF2 antibody) at dilution of 1:50 and Alexa Fluor 488-conjugated AffiniPure Goat Anti-Rabbit IgG(H+L).



1×10^6 RAW 264.7 cells were stained with 0.2ug IGSF2 antibody (26047-1-AP, red) and control antibody (blue). Fixed with 4% PFA blocked with 3% BSA (30 min). Alexa Fluor 488-conjugated AffiniPure Goat Anti-Rabbit IgG(H+L) with dilution 1:1500.