

For Research Use Only

IL-1 beta Polyclonal antibody

Catalog Number: 26048-1-AP **154 Publications**



Basic Information

Catalog Number: 26048-1-AP	GenBank Accession Number: NM_008361	Purification Method: Antigen affinity purification
Size: 150ul , Concentration: 850 ug/ml by Nanodrop;	GeneID (NCBI): 16176	Recommended Dilutions: WB 1:1000-1:6000
Source: Rabbit	Full Name: interleukin 1 beta	
Isotype: IgG	Calculated MW: 31 kDa	
Immunogen Catalog Number: AG23461	Observed MW: 31 kDa	

Applications

Tested Applications: WB, ELISA	Positive Controls:
Cited Applications: WB, IHC, IF, ELISA	WB : RAW 264.7 cells, LPS and Brefeldin A treated NR833 cells, LPS and Brefeldin A treated THP-1 cells
Species Specificity: human, mouse, rat	
Cited Species: human, mouse, rat, rabbit	

Background Information

Interleukin-1, produced mainly by blood monocytes, mediates the panoply of host reactions collectively known as acute phase response. It is identical to endogenous pyrogen. The multiple biologic activities that define IL1 are properties of a 15- to 18-kD protein that is derived from a 30- to 35-kD precursor. Interleukin 1 β (IL-1 β) is a member of the interleukin 1 cytokine family. It is a pro-inflammatory cytokine against infection, playing an important role in the pathogenesis of cancers. It signals through various adaptor proteins and kinases that lead to activation of numerous downstream targets.

Notable Publications

Author	Pubmed ID	Journal	Application
Tung-Sheng Chen	36116531	Life Sci	IHC
Liang Wang	34594215	Front Pharmacol	ELISA
Meng-Ting Zhang	28843150	Biomed Pharmacother	WB

Storage

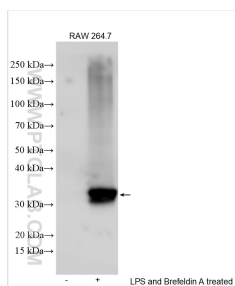
Storage:
Store at -20°C. Stable for one year after shipment.
Storage Buffer:
PBS with 0.02% sodium azide and 50% glycerol, pH7.3
Aliquoting is unnecessary for -20°C storage

*** 20ul sizes contain 0.1% BSA

For technical support and original validation data for this product please contact:
T: 1 (888) 4PTGLAB (1-888-478-4522) (toll free in USA), or 1(312) 455-8498 (outside USA)
E: proteintech@ptglab.com
W: ptglab.com

This product is exclusively available under Proteintech Group brand and is not available to purchase from any other manufacturer.

Selected Validation Data



LPS and Brefeldin A treated RAW 264.7 cells were subjected to SDS PAGE followed by western blot with 26048-1-AP (IL-1 beta antibody) at dilution of 1:3000 incubated at room temperature for 1.5 hours.