

For Research Use Only

Complement factor D Polyclonal antibody

Catalog Number: 26050-1-AP

Featured Product

2 Publications



Basic Information

Catalog Number:

26050-1-AP

Size:

150ul, Concentration: 400 ug/ml by Nanodrop and 233 ug/ml by Bradford method using BSA as the standard;

Source:

Rabbit

Isotype:

IgG

Immunogen Catalog Number:

AG23473

GenBank Accession Number:

BC057807

GeneID (NCBI):

1675

UNIPROT ID:

P00746

Full Name:

complement factor D (adipsin)

Calculated MW:

253 aa, 27 kDa

Observed MW:

27 kDa

Purification Method:

Antigen affinity purification

Recommended Dilutions:

WB 1:500-1:1000

IHC 1:50-1:500

Applications

Tested Applications:

WB, IHC, ELISA

Cited Applications:

WB

Species Specificity:

human

Cited Species:

human

Note-IHC: suggested antigen retrieval with TE buffer pH 9.0; (*) Alternatively, antigen retrieval may be performed with citrate buffer pH 6.0

Positive Controls:

WB : human plasma tissue, human placenta tissue, human plasma

IHC : human stomach tissue,

Background Information

Complement factor D, also known as adipsin, is a highly specific serine protease. Complement factor D is the rate-limiting enzyme in the alternative pathway of complement. It activates C3 convertase by cleaving factor B, which is a key step in the alternative pathway. Complement factor D catalyzes the cleavage of factor B to generate Ba (non-catalytic chain) and Bb (active catalytic subunit), which together with C3(H₂O) (or C3b) constitute the active C3 convertase C3(H₂O)Bb (or C3bBb). (PMID: 34566967; PMID: 27775713).

Notable Publications

Author	Pubmed ID	Journal	Application
Muyao Ye	34642907	Immunol Res	WB
Zheng Wang	37188751	Hypertens Res	WB

Storage

Storage:

Store at -20°C. Stable for one year after shipment.

Storage Buffer:

PBS with 0.02% sodium azide and 50% glycerol pH 7.3.

Aliquoting is unnecessary for -20°C storage

*** 20ul sizes contain 0.1% BSA

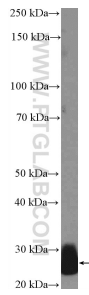
For technical support and original validation data for this product please contact:

T: 1 (888) 4PTGLAB (1-888-478-4522) (toll free in USA), or 1(312) 455-8498 (outside USA)

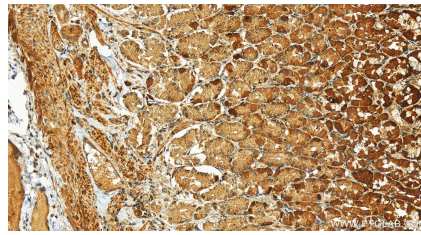
E: proteintech@ptglab.com
W: ptglab.com

This product is exclusively available under Proteintech Group brand and is not available to purchase from any other manufacturer.

Selected Validation Data



human plasma were subjected to SDS PAGE followed by western blot with 26050-1-AP (Complement factor D Antibody) at dilution of 1:600 incubated at room temperature for 1.5 hours.



Immunohistochemical analysis of paraffin-embedded human stomach tissue slide using 26050-1-AP (Complement factor D antibody) at dilution of 1:200 (under 20x lens). Heat mediated antigen retrieval with Tris-EDTA buffer (pH 9.0).