

For Research Use Only

# Ezrin Polyclonal antibody

Catalog Number: 26056-1-AP

Featured Product

16 Publications



## Basic Information

### Catalog Number:

26056-1-AP

### Size:

150ul, Concentration: 800 ug/ml by Nanodrop and 313 ug/ml by Bradford method using BSA as the standard;

### Source:

Rabbit

### Isotype:

IgG

### Immunogen Catalog Number:

AG23530

### GenBank Accession Number:

BC013903

### GeneID (NCBI):

7430

### ENSEMBL Gene ID:

ENSG00000092820

### UNIPROT ID:

P15311

### Full Name:

ezrin

### Calculated MW:

69 kDa

### Observed MW:

70-80 kDa

### Purification Method:

Antigen affinity purification

### Recommended Dilutions:

WB: 1:20000-1:100000

IP: 0.5-4.0 ug for 1.0-3.0 mg of total protein lysate

IHC: 1:500-1:2000

IF-P: 1:50-1:500

IF/ICC: 1:400-1:1600

FC (Intra): 0.40 ug per 10<sup>6</sup> cells in a 100 µl suspension

## Applications

### Tested Applications:

WB, IHC, IF/ICC, IF-P, FC (Intra), IP, ELISA

### Cited Applications:

WB, IHC, IF, IP, RIP

### Species Specificity:

human, mouse, rat

### Cited Species:

human, mouse, pig

**Note-IHC: suggested antigen retrieval with TE buffer pH 9.0; (\*) Alternatively, antigen retrieval may be performed with citrate buffer pH 6.0**

### Positive Controls:

WB: HeLa cells, mouse kidney tissue, NIH/3T3 cells, rat kidney tissue

IP: HeLa cells,

IHC: mouse stomach tissue, human small intestine tissue

IF-P: rat eye tissue, mouse eye tissue

IF/ICC: HeLa cells,

FC (Intra): HeLa cells,

## Background Information

Ezrin is a member of the ERM (Ezrin, Radixin, Moesin) protein family and serves as a crucial linker between the cell membrane and the actin cytoskeleton. It plays significant roles in various cellular processes, including maintaining cell morphology, facilitating cell movement and adhesion, regulating signal transduction, and influencing apoptosis.

## Notable Publications

Author	Pubmed ID	Journal	Application
Jaroslav Suchanski	28938000	PLoS One	WB,IF
Krishnendu Khan	33086476	Int J Mol Sci	WB
Hongyu Zhang	28322315	Sci Rep	WB

## Storage

### Storage:

Store at -20°C. Stable for one year after shipment.

### Storage Buffer:

PBS with 0.02% sodium azide and 50% glycerol, pH7.3

Aliquoting is unnecessary for -20°C storage

\*\*\* 20ul sizes contain 0.1% BSA

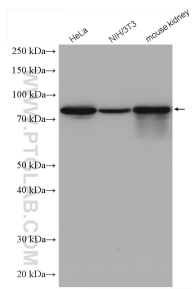
For technical support and original validation data for this product please contact:

T: 1 (888) 4PTGLAB (1-888-478-4522) (toll free in USA), or 1(312) 455-8498 (outside USA)

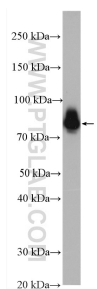
E: proteintech@ptglab.com  
W: ptglab.com

This product is exclusively available under Proteintech Group brand and is not available to purchase from any other manufacturer.

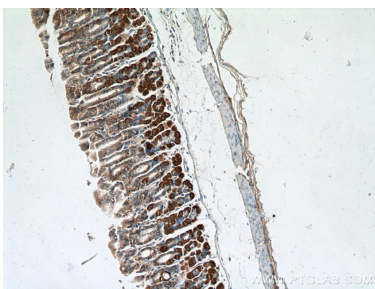
Selected Validation Data



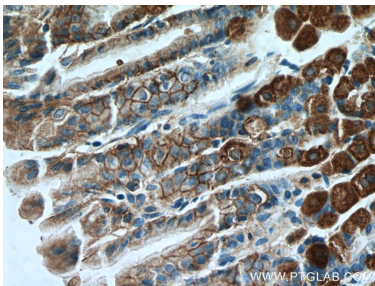
Various lysates were subjected to SDS PAGE followed by western blot with 26056-1-AP (Ezrin antibody) at dilution of 1:5000 incubated at room temperature for 1.5 hours.



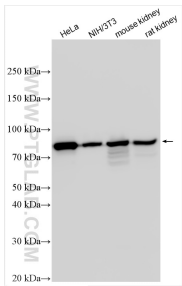
HeLa cells were subjected to SDS PAGE followed by western blot with 26056-1-AP (Ezrin antibody) at dilution of 1:10000 incubated at room temperature for 1.5 hours.



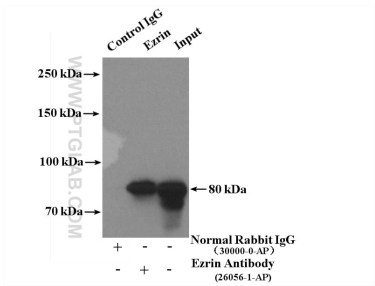
Immunohistochemical analysis of paraffin-embedded mouse stomach tissue slide using 26056-1-AP (Ezrin antibody) at dilution of 1:2000 (under 10x lens. Heat mediated antigen retrieval with Tris-EDTA buffer (pH 9.0).



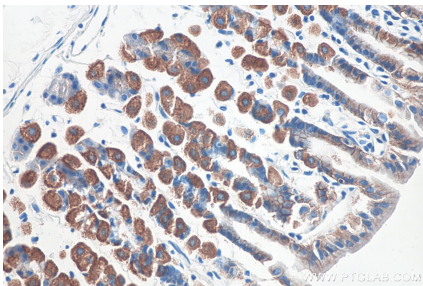
Immunohistochemical analysis of paraffin-embedded mouse stomach tissue slide using 26056-1-AP (Ezrin antibody) at dilution of 1:2000 (under 40x lens. Heat mediated antigen retrieval with Tris-EDTA buffer (pH 9.0).



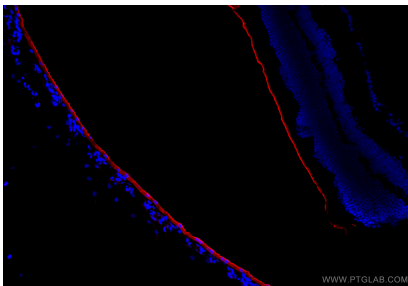
Various lysates were subjected to SDS PAGE followed by western blot with 26056-1-AP (Ezrin antibody) at dilution of 1:80000 incubated at room temperature for 1.5 hours.



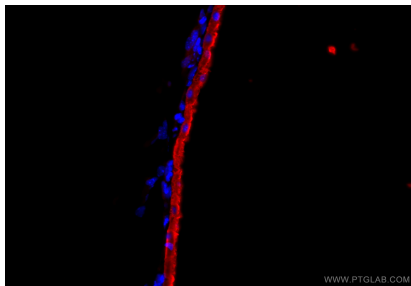
IP result of anti-Ezrin (IP:26056-1-AP, 4ug; Detection:26056-1-AP 1:2000) with HeLa cells lysate 3200ug.



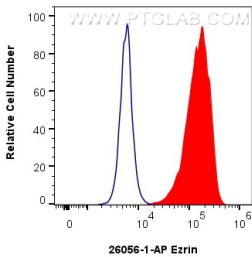
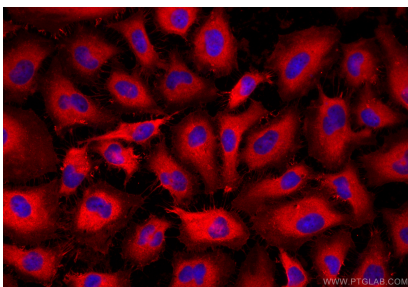
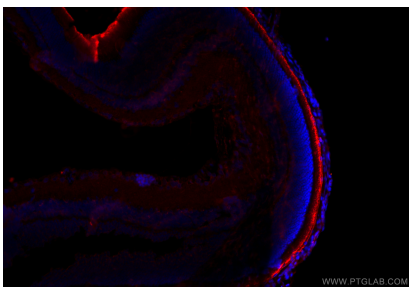
Immunohistochemical analysis of paraffin-embedded mouse stomach tissue slide using 26056-1-AP (Ezrin antibody) at dilution of 1:8000 (under 40x lens).



Immunofluorescent analysis of (4% PFA) fixed paraffin-embedded mouse eye tissue using Ezrin antibody (26056-1-AP) at dilution of 1:200 and CoraLite® 594-Conjugated Goat Anti-Rabbit IgG(H+L) (SA00013-4). Heat mediated antigen retrieval with Tris-EDTA buffer (pH 9.0).



Immunofluorescent analysis of (4% PFA) fixed paraffin-embedded mouse eye tissue using Ezrin antibody (26056-1-AP) at dilution of 1:200 and CoraLite® 594-Conjugated Goat Anti-Rabbit IgG(H+L) (SA00013-4). Heat mediated antigen retrieval with Tris-EDTA buffer (pH 9.0).



Immunofluorescent analysis of (4% PFA) fixed paraffin-embedded rat eye tissue using Ezrin antibody (26056-1-AP) at dilution of 1:200 and CoraLite®594-Conjugated Goat Anti-Rabbit IgG(H+L) (SA00013-4). Heat mediated antigen retrieval with Tris-EDTA buffer (pH 9.0).

Immunofluorescent analysis of (-20°C Ethanol) fixed HeLa cells using Ezrin antibody (26056-1-AP) at dilution of 1:800 and CoraLite®594-Conjugated Goat Anti-Rabbit IgG(H+L) (SA00013-4).

1x10<sup>6</sup> HeLa cells were intracellularly stained with 0.4 ug Ezrin Polyclonal antibody (26056-1-AP) and CoraLite®488-Conjugated AffiniPure Goat Anti-Rabbit IgG(H+L) (SA00013-2)(red), or 0.4 ug Rabbit IgG control Rabbit PolyAb (30000-0-AP) (blue). Cells were fixed with 4% PFA and permeabilized with Flow Cytometry Perm Buffer (PF00011-C).