

For Research Use Only

# PARP10 Polyclonal antibody

Catalog Number: 26072-1-AP



## Basic Information

**Catalog Number:**

26072-1-AP

**Size:**

150ul, Concentration: 800 ug/ml by Nanodrop and 387 ug/ml by Bradford method using BSA as the standard;

**Source:**

Rabbit

**Isotype:**

IgG

**Immunogen Catalog Number:**

AG23457

**GenBank Accession Number:**

BC136542

**GeneID (NCBI):**

84875

**UNIPROT ID:**

Q53GL7

**Full Name:**

poly (ADP-ribose) polymerase family, member 10

**Observed MW:**

130-140 kDa

**Purification Method:**

Antigen affinity purification

**Recommended Dilutions:**

WB 1:500-1:1000

IP 0.5-4.0 ug for 1.0-3.0 mg of total protein lysate

IHC 1:250-1:1000

IF/ICC 1:50-1:500

## Applications

**Tested Applications:**

WB, IHC, IF/ICC, IP, ELISA

**Species Specificity:**

human

**Note-IHC: suggested antigen retrieval with TE buffer pH 9.0; (\*) Alternatively, antigen retrieval may be performed with citrate buffer pH 6.0**

**Positive Controls:**

WB : Jurkat cells, HL-60 cells, MCF-7 cells

IP : Jurkat cells,

IHC : human intrahepatic cholangiocarcinoma tissue,

IF/ICC : MCF-7 cells,

## Storage

**Storage:**

Store at -20°C. Stable for one year after shipment.

**Storage Buffer:**

PBS with 0.02% sodium azide and 50% glycerol pH 7.3.

Aliquoting is unnecessary for -20°C storage

\*\*\* 20ul sizes contain 0.1% BSA

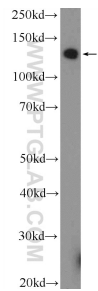
For technical support and original validation data for this product please contact:

T: 1 (888) 4PTGLAB (1-888-478-4522) (toll free in USA), or 1(312) 455-8498 (outside USA)

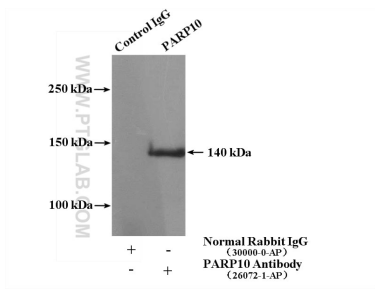
E: [proteintech@ptglab.com](mailto:proteintech@ptglab.com)  
W: [ptglab.com](http://ptglab.com)

This product is exclusively available under Proteintech Group brand and is not available to purchase from any other manufacturer.

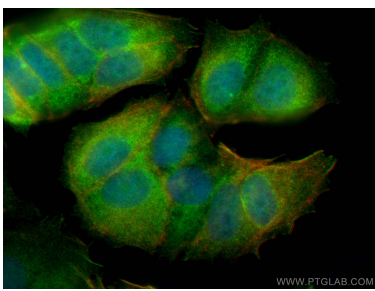
Selected Validation Data



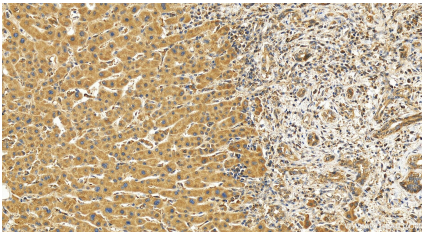
Jurkat cells were subjected to SDS PAGE followed by western blot with 26072-1-AP (PARP10 Antibody) at dilution of 1:600 incubated at room temperature for 1.5 hours.



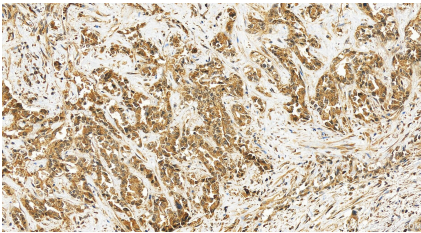
IP result of anti-PARP10 (IP:26072-1-AP, 4ug; Detection:26072-1-AP 1:500) with Jurkat cells lysate 3200ug.



Immunofluorescent analysis of (4% PFA) fixed MCF-7 cells using PARP10 antibody (26072-1-AP) at dilution of 1:200 and Coralite@488-Conjugated AffiniPure Goat Anti-Rabbit IgG(H+L) (SA00013-2), CL594-phalloidin (red).



Immunohistochemical analysis of paraffin-embedded human intrahepatic cholangiocarcinoma tissue slide using 26072-1-AP (PARP10 antibody) at dilution of 1:500 (under 20x lens). Heat mediated antigen retrieval with Tris-EDTA buffer (pH 9.0).



Immunohistochemical analysis of paraffin-embedded human intrahepatic cholangiocarcinoma tissue slide using 26072-1-AP (PARP10 antibody) at dilution of 1:500 (under 20x lens). Heat mediated antigen retrieval with Tris-EDTA buffer (pH 9.0).