

For Research Use Only

CLEC12B Polyclonal antibody

Catalog Number: 26077-1-AP



Basic Information

Catalog Number:

26077-1-AP

Size:

150ul, Concentration: 500 ug/ml by Nanodrop and 353 ug/ml by Bradford method using BSA as the standard;

Source:

Rabbit

Isotype:

IgG

Immunogen Catalog Number:

AG23396

GenBank Accession Number:

BC136805

GeneID (NCBI):

387837

UNIPROT ID:

Q2HXU8

Full Name:

C-type lectin domain family 12, member B

Calculated MW:

32 kDa

Observed MW:

32 kDa

Purification Method:

Antigen affinity purification

Recommended Dilutions:

WB 1:500-1:2000

Applications

Tested Applications:

WB, ELISA

Species Specificity:

human, mouse, rat

Positive Controls:

WB: mouse brain tissue, K-562 cells, mouse spleen tissue, rat brain tissue

Background Information

CLEC12B (C-type lectin domain family 12 member B) is a single-pass type II membrane protein of the C-type lectin-like family. CLEC12B acts as an inhibitory receptor on myeloid cells. CLEC12B may be involved in limiting the activity of monocyte-derived immune cells after cell differentiation and possibly during inflammatory diseases. (PMID: 17562706)

Storage

Storage:

Store at -20°C. Stable for one year after shipment.

Storage Buffer:

PBS with 0.02% sodium azide and 50% glycerol pH 7.3.

Aliquoting is unnecessary for -20°C storage

*** 20ul sizes contain 0.1% BSA

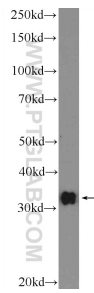
For technical support and original validation data for this product please contact:

T: 1 (888) 4PTGLAB (1-888-478-4522) (toll free in USA), or 1(312) 455-8498 (outside USA)

E: proteintech@ptglab.com
W: ptglab.com

This product is exclusively available under Proteintech Group brand and is not available to purchase from any other manufacturer.

Selected Validation Data



mouse brain tissue were subjected to SDS PAGE followed by western blot with 26077-1-AP (CLEC12B Antibody) at dilution of 1:1000 incubated at room temperature for 1.5 hours.