

For Research Use Only

# ENT2 Polyclonal antibody, PBS Only

Catalog Number: 26082-1-PBS



## Basic Information

**Catalog Number:**

26082-1-PBS

**Size:**

100ug, Concentration: 1 mg/ml by Nanodrop;

**Source:**

Rabbit

**Isotype:**

IgG

**Immunogen Catalog Number:**

AG23310

**GenBank Accession Number:**

BC093634

**GeneID (NCBI):**

3177

**UNIPROT ID:**

Q14542

**Full Name:**

solute carrier family 29 (nucleoside transporters), member 2

**Observed MW:**

50 kDa

**Purification Method:**

Antigen affinity purification

## Applications

**Tested Applications:**

WB, Indirect ELISA

**Species Specificity:**

human, mouse, rat

## Background Information

SLC29A2 also known as ENT2, comprises 456 amino acids and shares 46% amino acid identity with ENT1. ENT2 is involved in the facilitative transport of nucleosides and nucleobases and maintains their cellular homeostasis. The predicted molecular weight of ENT1 is 50 kDa, while 45 kDa band may be observed due to the deglycosylation (PMID: 10722669)

## Storage

**Storage:**

Store at -80°C.

**Storage Buffer:**

PBS only, pH7.3

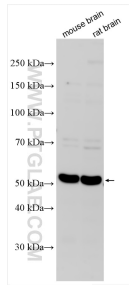
For technical support and original validation data for this product please contact:

T: 1 (888) 4PTGLAB (1-888-478-4522) (toll free in USA), or 1(312) 455-8498 (outside USA)

E: [proteintech@ptglab.com](mailto:proteintech@ptglab.com)  
W: [ptglab.com](http://ptglab.com)

**This product is exclusively available under Proteintech Group brand and is not available to purchase from any other manufacturer.**

## Selected Validation Data



Various lysates were subjected to SDS PAGE followed by western blot with 26082-1-AP (ENT2 antibody) at dilution of 1:600 incubated at room temperature for 1.5 hours. This data was developed using the same antibody clone with 26082-1-PBS in a different storage buffer formulation.