

For Research Use Only

C1orf58 Polyclonal antibody

Catalog Number: 26109-1-AP



Basic Information

Catalog Number:

26109-1-AP

Size:

150ul, Concentration: 240 ug/ml by Nanodrop and 200 ug/ml by Bradford method using BSA as the standard;

Source:

Rabbit

Isotype:

IgG

Immunogen Catalog Number:

AG23443

GenBank Accession Number:

BC113635

GeneID (NCBI):

148362

UNIPROT ID:

Q5VW32

Full Name:

chromosome 1 open reading frame 58

Observed MW:

46 kDa

Purification Method:

Antigen affinity purification

Recommended Dilutions:

WB 1:200-1:1000

IP 0.5-4.0 ug for 1.0-3.0 mg of total protein lysate

IHC 1:50-1:500

IF/ICC 1:200-1:800

Applications

Tested Applications:

WB, IHC, IF/ICC, IP, ELISA

Species Specificity:

human, mouse

Note-IHC: suggested antigen retrieval with TE buffer pH 9.0; (*) Alternatively, antigen retrieval may be performed with citrate buffer pH 6.0

Positive Controls:

WB : HEK-293 cells, mouse brain tissue

IP : HepG2 cells,

IHC : human breast cancer tissue,

IF/ICC : A431 cells,

Storage

Storage:

Store at -20°C. Stable for one year after shipment.

Storage Buffer:

PBS with 0.02% sodium azide and 50% glycerol pH 7.3.

Aliquoting is unnecessary for -20°C storage

*** 20ul sizes contain 0.1% BSA

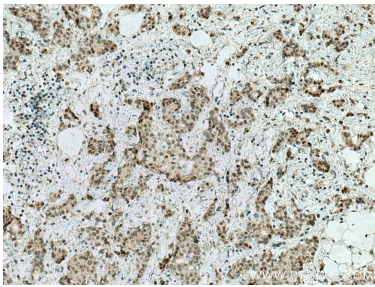
For technical support and original validation data for this product please contact:

T: 1 (888) 4PTGLAB (1-888-478-4522) (toll free in USA), or 1(312) 455-8498 (outside USA)

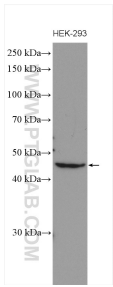
E: proteintech@ptglab.com
W: ptglab.com

This product is exclusively available under Proteintech Group brand and is not available to purchase from any other manufacturer.

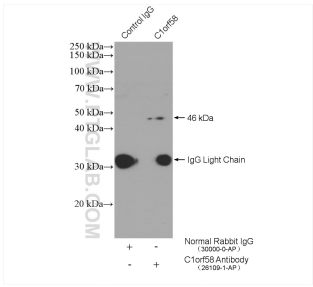
Selected Validation Data



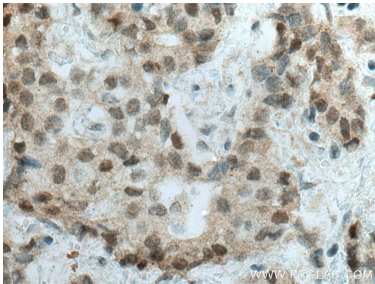
Immunohistochemical analysis of paraffin-embedded human breast cancer tissue slide using 26109-1-AP (C1orf58 antibody) at dilution of 1:200 (under 10x lens). Heat mediated antigen retrieval with Tris-EDTA buffer (pH 9.0).



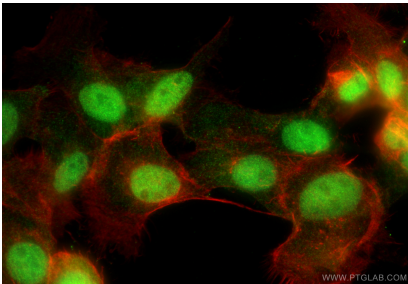
HEK293 cell lysates were subjected to SDS PAGE followed by western blot with 26109-1-AP (C1orf58 antibody) at dilution of 1:300 incubated at room temperature for 1.5 hours.



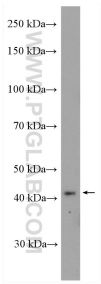
IP result of anti-C1orf58 (IP:26109-1-AP, 4ug; Detection:26109-1-AP 1:300) with HepG2 cells lysate 1680 ug.



Immunohistochemical analysis of paraffin-embedded human breast cancer tissue slide using 26109-1-AP (C1orf58 antibody) at dilution of 1:200 (under 40x lens). Heat mediated antigen retrieval with Tris-EDTA buffer (pH 9.0).



Immunofluorescent analysis of (4% PFA) fixed A431 cells using C1orf58 antibody (26109-1-AP) at dilution of 1:400 and CoraLite@488-Conjugated Goat Anti-Rabbit IgG(H+L) (SA00013-2), CL594-Phalloidin (red).



mouse brain tissue were subjected to SDS PAGE followed by western blot with 26109-1-AP (C1orf58 antibody) at dilution of 1:300 incubated at room temperature for 1.5 hours.