

For Research Use Only

# RIMKLB Polyclonal antibody

Catalog Number: 26111-1-AP

Featured Product

2 Publications



## Basic Information

### Catalog Number:

26111-1-AP

### Size:

150ul, Concentration: 400 ug/ml by Nanodrop and 233 ug/ml by Bradford method using BSA as the standard;

### Source:

Rabbit

### Isotype:

IgG

### Immunogen Catalog Number:

AG23631

### GenBank Accession Number:

BC033793

### GeneID (NCBI):

57494

### UNIPROT ID:

Q9ULI2

### Full Name:

ribosomal modification protein rimK-like family member B

### Calculated MW:

42 kDa

### Observed MW:

42-48 kDa

### Purification Method:

Antigen affinity purification

### Recommended Dilutions:

WB 1:200-1:1000

IHC 1:50-1:500

IF-P 1:50-1:500

## Applications

### Tested Applications:

WB, IHC, IF-P, ELISA

### Cited Applications:

WB

### Species Specificity:

human, mouse

### Cited Species:

human

### Positive Controls:

WB : mouse eye tissue,

IHC : mouse testis tissue,

IF-P : mouse testis tissue,

**Note-IHC: suggested antigen retrieval with TE buffer pH 9.0; (\*) Alternatively, antigen retrieval may be performed with citrate buffer pH 6.0**

## Notable Publications

Author	Pubmed ID	Journal	Application
Yi Xiao	35105939	Cell Res	WB
Ivonne Becker	38011891	J Inherit Metab Dis	WB

## Storage

### Storage:

Store at -20°C. Stable for one year after shipment.

### Storage Buffer:

PBS with 0.02% sodium azide and 50% glycerol pH 7.3.

Aliquoting is unnecessary for -20°C storage

\*\*\* 20ul sizes contain 0.1% BSA

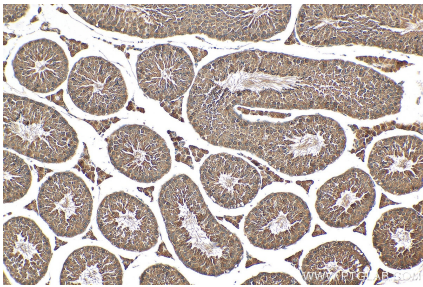
For technical support and original validation data for this product please contact:

T: 1 (888) 4PTGLAB (1-888-478-4522) (toll free in USA), or 1(312) 455-8498 (outside USA)

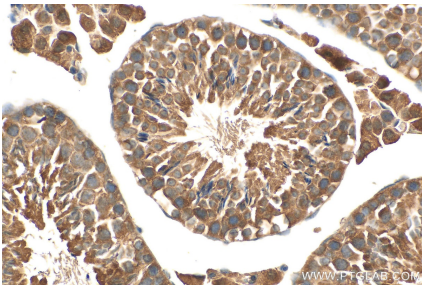
E: [proteintech@ptglab.com](mailto:proteintech@ptglab.com)  
W: [ptglab.com](http://ptglab.com)

This product is exclusively available under Proteintech Group brand and is not available to purchase from any other manufacturer.

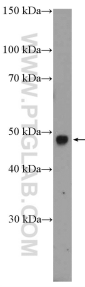
Selected Validation Data



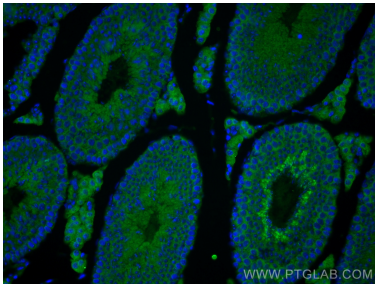
Immunohistochemical analysis of paraffin-embedded mouse testis tissue slide using 26111-1-AP (RIMKLB antibody) at dilution of 1:200 (under 10x lens). Heat mediated antigen retrieval with Tris-EDTA buffer (pH 9.0).



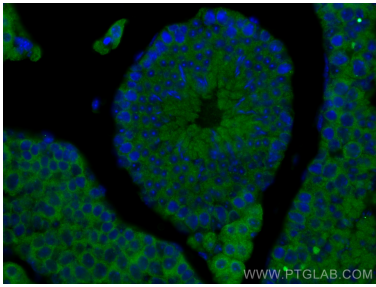
Immunohistochemical analysis of paraffin-embedded mouse testis tissue slide using 26111-1-AP (RIMKLB antibody) at dilution of 1:200 (under 40x lens). Heat mediated antigen retrieval with Tris-EDTA buffer (pH 9.0).



mouse eye tissue were subjected to SDS PAGE followed by western blot with 26111-1-AP (RIMKLB Antibody) at dilution of 1:300 incubated at room temperature for 1.5 hours.



Immunofluorescent analysis of (4% PFA) fixed mouse testis tissue using RIMKLB antibody (26111-1-AP) at dilution of 1:200 and CoraLite@488-Conjugated AffiniPure Goat Anti-Rabbit IgG(H+L).



Immunofluorescent analysis of (4% PFA) fixed mouse testis tissue using RIMKLB antibody (26111-1-AP) at dilution of 1:200 and CoraLite@488-Conjugated AffiniPure Goat Anti-Rabbit IgG(H+L).