

For Research Use Only

GPM6B Polyclonal antibody

Catalog Number: 26122-1-AP



Basic Information

Catalog Number: 26122-1-AP	GenBank Accession Number: BC047295	Purification Method: Antigen affinity purification
Size: 150ul , Concentration: 650 µg/ml by Nanodrop;	GeneID (NCBI): 2824	Recommended Dilutions: WB: 1:1000-1:6000 IP: 0.5-4.0 ug for 1.0-3.0 mg of total protein lysate IHC: 1:50-1:500 IF-P: 1:50-1:500
Source: Rabbit	UNIPROT ID: Q13491	
Isotype: IgG	Full Name: glycoprotein M6B	
Immunogen Catalog Number: AG23507	Observed MW: 27-36 kDa	

Applications

Tested Applications: WB, IHC, IF-P, IP, ELISA	Positive Controls: WB : mouse brain tissue, 37°C incubated mouse brain tissue IP : rat brain tissue, IHC : mouse brain tissue, IF-P : mouse brain tissue,
Species Specificity: human, mouse, rat	
Note-IHC: suggested antigen retrieval with TE buffer pH 9.0; (*) Alternatively, antigen retrieval may be performed with citrate buffer pH 6.0	

Background Information

GPM6B (Glycoprotein M6B) is a highly conserved, multi-pass transmembrane glycoprotein encoded by the GPM6B gene on human chromosome Xp22.2. As a member of the proteolipid protein family, it is predominantly expressed in the central nervous system (in neurons and oligodendrocytes) and is involved in key processes such as myelination, regulation of serotonin transporter (SERT) trafficking, and actin cytoskeleton maintenance. Beyond neural functions, GPM6B also promotes bone formation by regulating osteoblast mineralization and influences smooth muscle cell differentiation via the TGF-beta-Smad2/3 pathway. Subcellularly, it localizes to the plasma membrane and lipid rafts. Genetic variations in GPM6B have been associated with several disorders, including Pelizaeus-Merzbacher disease, major depressive disorder, and osteoarthritis.

Storage

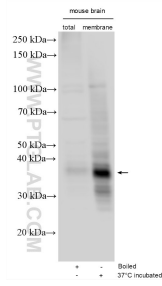
Storage:
Store at -20°C. Stable for one year after shipment.
Storage Buffer:
PBS with 0.02% sodium azide and 50% glycerol, pH7.3
Aliquoting is unnecessary for -20°C storage

*** 20ul sizes contain 0.1% BSA

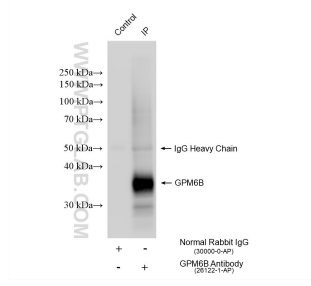
For technical support and original validation data for this product please contact:
T: 1 (888) 4PTGLAB (1-888-478-4522) (toll free in USA), or 1(312) 455-8498 (outside USA)
E: proteintech@ptglab.com
W: ptglab.com

This product is exclusively available under Proteintech Group brand and is not available to purchase from any other manufacturer.

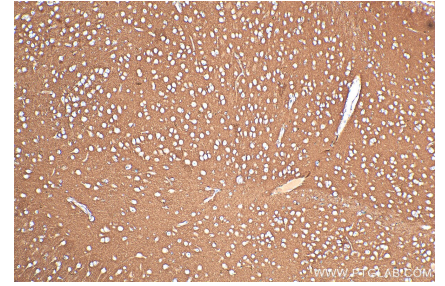
Selected Validation Data



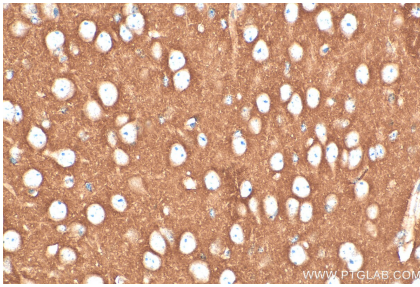
Various lysates were subjected to SDS PAGE followed by western blot with 26122-1-AP (GPM6B antibody) at dilution of 1:3000 incubated at room temperature for 1.5 hours.



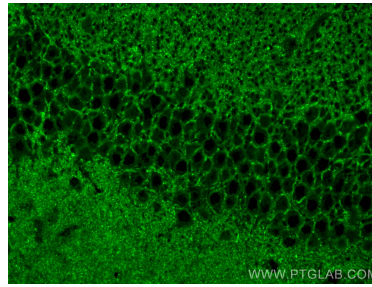
IP result of anti-GPM6B (IP:26122-1-AP, 4 μ g; Detection:26122-1-AP 1:1000) with rat brain tissue lysate 1720 μ g.



Immunohistochemical analysis of paraffin-embedded mouse brain tissue slide using 26122-1-AP (GPM6B antibody) at dilution of 1:200 (under 10 \times lens). Heat mediated antigen retrieval with Tris-EDTA buffer (pH 9.0).



Immunohistochemical analysis of paraffin-embedded mouse brain tissue slide using 26122-1-AP (GPM6B antibody) at dilution of 1:200 (under 40 \times lens). Heat mediated antigen retrieval with Tris-EDTA buffer (pH 9.0).



Immunofluorescent analysis of (4% PFA) fixed mouse brain tissue using GPM6B antibody (26122-1-AP) at dilution of 1:200 and CoraLite@488-Conjugated AffiniPure Goat Anti-Rabbit IgG(H+L).