

For Research Use Only

C14orf28 Polyclonal antibody

Catalog Number: 26130-1-AP



Basic Information

Catalog Number:

26130-1-AP

Size:

150ul , Concentration: 400 ug/ml by Nanodrop and 293 ug/ml by Bradford method using BSA as the standard;

Source:

Rabbit

Isotype:

IgG

Immunogen Catalog Number:

AG23441

GenBank Accession Number:

BC105030

GeneID (NCBI):

122525

UNIPROT ID:

Q4W4Y0

Full Name:

chromosome 14 open reading frame 28

Observed MW:

35-40 kDa

Purification Method:

Antigen affinity purification

Recommended Dilutions:

WB 1:200-1:1000

IP 0.5-4.0 ug for 1.0-3.0 mg of total protein lysate

IF/ICC 1:50-1:500

Applications

Tested Applications:

WB, IF/ICC, IP, ELISA

Species Specificity:

human

Positive Controls:

WB : HeLa cells,

IP : HeLa cells,

IF/ICC : HeLa cells,

Storage

Storage:

Store at -20°C. Stable for one year after shipment.

Storage Buffer:

PBS with 0.02% sodium azide and 50% glycerol pH 7.3.

Aliquoting is unnecessary for -20°C storage

*** 20ul sizes contain 0.1% BSA

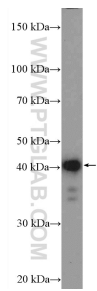
For technical support and original validation data for this product please contact:

T: 1 (888) 4PTGLAB (1-888-478-4522) (toll free in USA), or 1(312) 455-8498 (outside USA)

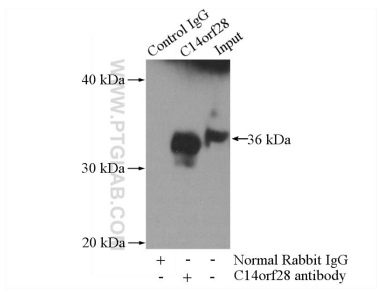
E: proteintech@ptglab.com
W: ptglab.com

This product is exclusively available under Proteintech Group brand and is not available to purchase from any other manufacturer.

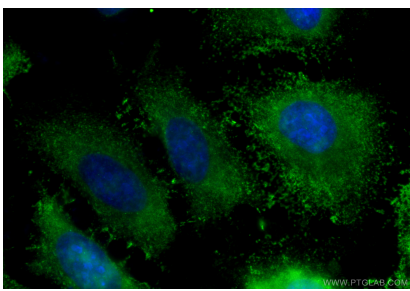
Selected Validation Data



HeLa cells were subjected to SDS PAGE followed by western blot with 26130-1-AP (C14orf28 Antibody) at dilution of 1:300 incubated at room temperature for 1.5 hours.



IP result of anti-C14orf28 (IP:26130-1-AP, 4ug; Detection:26130-1-AP 1:300) with HeLa cells lysate 1200ug.



Immunofluorescent analysis of (-20°C Ethanol) fixed HeLa cells using C14orf28 antibody (26130-1-AP) at dilution of 1:200 and CoraLite®488-Conjugated Goat Anti-Rabbit IgG(H+L) (SA00013-2).