

For Research Use Only

C6orf25 Polyclonal antibody

Catalog Number: 26131-1-AP



Basic Information

Catalog Number: 26131-1-AP	GenBank Accession Number: BC113719	Purification Method: Antigen affinity purification
Size: 150ul , Concentration: 400 ug/ml by Nanodrop;	GeneID (NCBI): 80739	Recommended Dilutions: WB 1:500-1:1000
Source: Rabbit	UNIPROT ID: O95866	
Isotype: IgG	Full Name: chromosome 6 open reading frame 25	
Immunogen Catalog Number: AG23442	Observed MW: 24-29 kDa	

Applications

Tested Applications: WB, ELISA	Positive Controls: WB : human peripheral blood platelets,
Species Specificity: human	

Background Information

C6orf25, also called G6B, is an inhibitory receptor expressed on the surface of platelets, and it acts as a critical regulator of hematopoietic lineage differentiation, megakaryocyte function and platelet production (PMID: 17311996; 12665801; 27743390). C6orf25 has seven isoforms. Isoform B is the only isoform to contain both a transmembrane region and 2 immunoreceptor tyrosine-based inhibitor motifs (ITIMs) and, thus, the only one which probably has a role of inhibitory receptor. Isoform A may be the activating counterpart of isoform B (PMID: 11544253).

Storage

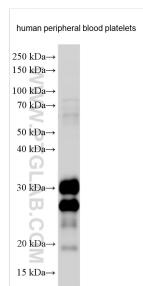
Storage:
Store at -20°C. Stable for one year after shipment.
Storage Buffer:
PBS with 0.02% sodium azide and 50% glycerol pH 7.3.
Aliquoting is unnecessary for -20°C storage

*** 20ul sizes contain 0.1% BSA

For technical support and original validation data for this product please contact:
T: 1 (888) 4PTGLAB (1-888-478-4522) (toll free in USA), or 1(312) 455-8498 (outside USA)
E: proteintech@ptglab.com
W: ptglab.com

This product is exclusively available under Proteintech Group brand and is not available to purchase from any other manufacturer.

Selected Validation Data



Various lysates were subjected to SDS PAGE followed by western blot with 26131-1-AP (C6orf25 antibody) at dilution of 1:500 incubated at room temperature for 1.5 hours.