

For Research Use Only

TGF beta 1 Polyclonal antibody

Catalog Number: 26155-1-AP

3 Publications



Basic Information

| | | |
|---|---|--|
| Catalog Number: 26155-1-AP | GenBank Accession Number: NM-011577 | Purification Method: Antigen affinity purification |
| Size: 150ul , Concentration: 800 ug/ml by Nanodrop; | GeneID (NCBI): 21803 | Recommended Dilutions: WB 1:500-1:2000 IF/ICC 1:200-1:800 |
| Source: Rabbit | UNIPROT ID: P01137 | |
| Isotype: IgG | Full Name: transforming growth factor, beta 1 | |
| Immunogen Catalog Number: AG24078 | Observed MW: 44 kDa | |

Applications

| | |
|--|--|
| Tested Applications: WB, IF/ICC, FC (Intra), ELISA | Positive Controls: WB : L-929 cells, NIH/3T3 cells, RAW 264.7 cells, C6 IF/ICC : NIH/3T3 cells, |
| Cited Applications: WB, IHC, IF | |
| Species Specificity: mouse, rat | |
| Cited Species: human, mouse | |

Background Information

TGF beta 1 is a potent cytokine capable of regulating multiple cellular processes including cell proliferation, differentiation, wound healing, and immune response. TGF beta 1 is identified in various immune cells and its activity varies in different cell types or cells at different developmental stages¹. TGF beta 1 functions by binding to the TGFβ1 receptors, which subsequently activate the canonical SMAD pathway or non-canonical signaling cascades, such as the mitogen-activated protein kinase (MAPK) pathway, phosphatidylinositol-3 kinase and AKT (PI3K-AKT), and Rho family of GTPases (Rho GTPase). What is special about TGF beta 1 is its context-dependent nature that is particularly true for tumors. Full-length, inactive 44 kD TGFβ1 is cleaved into mature TGFβ1 (13 kD). TGFβ1 also homodimerizes and heterodimerizes with TGFβ2, so there is potential for multiple different band sizes in WB (12, 25, 45 to 65 kDa).

Notable Publications

| Author | Pubmed ID | Journal | Application |
|--------------|-----------|---------------------|-------------|
| Liming Zheng | 39136964 | Mol Pharm | IHC |
| Licheng Zhu | 39053421 | Biomed Pharmacother | WB |
| Zucheng Luo | 38942343 | Cell Signal | WB,IF |

Storage

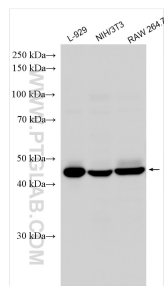
Storage:
Store at -20°C. Stable for one year after shipment.
Storage Buffer:
PBS with 0.02% sodium azide and 50% glycerol pH 7.3.
Aliquoting is unnecessary for -20°C storage

*** 20ul sizes contain 0.1% BSA

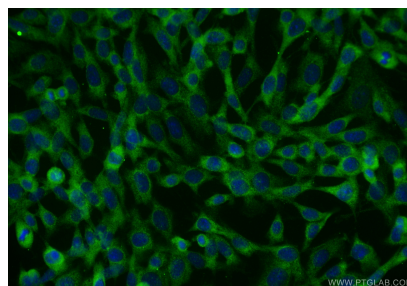
For technical support and original validation data for this product please contact:
T: 1 (888) 4PTGLAB (1-888-478-4522) (toll free in USA), or 1(312) 455-8498 (outside USA)
E: proteintech@ptglab.com
W: ptglab.com

This product is exclusively available under Proteintech Group brand and is not available to purchase from any other manufacturer.

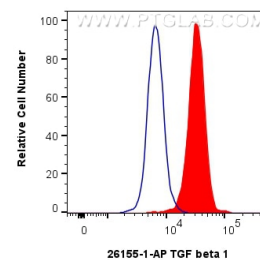
Selected Validation Data



Various lysates were subjected to SDS PAGE followed by western blot with 26155-1-AP (Tgfb1 antibody) at dilution of 1:1000 incubated at room temperature for 1.5 hours.



Immunofluorescent analysis of (-20°C Ethanol) fixed NIH/3T3 cells using TGF beta 1 antibody (26155-1-AP) at dilution of 1:400 and CoraLite®488-Conjugated Goat Anti-Rabbit IgG(H+L) (SA00013-2).



1x10⁶ NIH/3T3 cells were intracellularly stained with 0.25 ug TGF beta 1 Polyclonal antibody (26155-1-AP) and CoraLite®488-Conjugated Goat Anti-Rabbit IgG(H+L) (SA00013-2)(red), or 0.25 ug Rabbit IgG control Rabbit PolyAb (30000-0-AP) (blue). Cells were fixed with 4% PFA and permeabilized with Flow Cytometry Perm Buffer (PF00011-C).