

# METTL14 Polyclonal antibody

Catalog Number: 26158-1-AP

Featured Product

89 Publications

## Basic Information

## Catalog Number:

26158-1-AP

## Size:

150ul, Concentration: 550 µg/ml by Nanodrop;

## Source:

Rabbit

## Isotype:

IgG

## Immunogen Catalog Number:

AG14325

## GenBank Accession Number:

BC007449

## GeneID (NCBI):

57721

## Full Name:

methyltransferase like 14

## Calculated MW:

456 aa, 52 kDa

## Observed MW:

55-60 kDa

## Purification Method:

Protein A purification

## Recommended Dilutions:

WB 1:2000-1:10000

## Applications

## Tested Applications:

WB, ELISA

## Cited Applications:

IF, IHC, IP, RIP, WB

## Species Specificity:

human

## Cited Species:

human, chicken, monkey

## Positive Controls:

WB: A549 cells, HeLa cells, NCCIT cells, PC-3 cells

## Background Information

METTL14, is also named as Methyltransferase-like protein 14 or KIAA1627, is a 456 amino acid protein, which belongs to the MT-A70-like family and localized in the nucleus. The METTL3-METTL14 heterodimer forms a N6-methyltransferase complex that methylates adenosine residues of some mRNAs and regulates the circadian clock and differentiation of embryonic stem cells. N6-methyladenosine (m6A), which takes place at the 5'-[AG]GAC-3' consensus sites of some mRNAs, plays a role in the efficiency of mRNA splicing, processing and mRNA stability. M6A regulates the length of the circadian clock: acts as a early pace-setter in the circadian loop. M6A also acts as a regulator of mRNA stability: in embryonic stem cells (ESCs), m6A methylation of mRNAs encoding key naïve pluripotency-promoting transcripts results in transcript destabilization.

## Notable Publications

Author	Pubmed ID	Journal	Application
Seiya Takemoto	34536357	Biochem Pharmacol	WB
FANG YANG	34733365	Oncol Lett	WB
Motoki Isono	36113565	Biochem Pharmacol	WB

## Storage

## Storage:

Store at -20°C. Stable for one year after shipment.

## Storage Buffer:

PBS with 0.02% sodium azide and 50% glycerol pH 7.3.

Aliquoting is unnecessary for -20°C storage

\*\*\* 20ul sizes contain 0.1% BSA

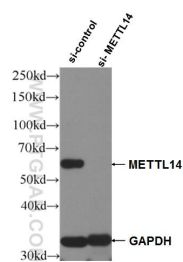
For technical support and original validation data for this product please contact:

T: 1 (888) 4PTGLAB (1-888-478-4522) (toll free in USA), or 1(312) 455-8498 (outside USA)

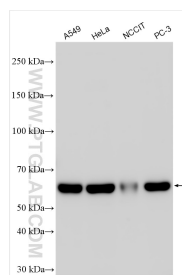
E: [proteintech@ptglab.com](mailto:proteintech@ptglab.com)  
W: [ptglab.com](http://ptglab.com)

This product is exclusively available under Proteintech Group brand and is not available to purchase from any other manufacturer.

## Selected Validation Data



WB result of METTL14 antibody (26158-1-AP; 1:3000; incubated at room temperature for 1.5 hours) with sh-Control and sh-METTL14 transfected Raji cells.



Various lysates were subjected to SDS PAGE followed by western blot with 26158-1-AP (METTL14 antibody) at dilution of 1:5000 incubated at room temperature for 1.5 hours.