

For Research Use Only

MCP-1/CCL2 Polyclonal antibody

Catalog Number: 26161-1-AP

36 Publications



Basic Information

Catalog Number:

26161-1-AP

Size:

150ul, Concentration: 600 ug/ml by Nanodrop;

Source:

Rabbit

Isotype:

IgG

Immunogen Catalog Number:

AG24085

GenBank Accession Number:

NM-011333

GeneID (NCBI):

20296

Full Name:

chemokine (C-C motif) ligand 2

Observed MW:

16-20 kDa

Purification Method:

Antigen affinity purification

Recommended Dilutions:

WB 1:500-1:2000

Applications

Tested Applications:

WB, ELISA

Cited Applications:

WB, IHC, IF

Species Specificity:

mouse

Cited Species:

mouse, rat

Positive Controls:

WB: LPS and Brefeldin A treated RAW 264.7 cells,

Background Information

Monocyte chemoattractant protein-1 (MCP-1/CCL2) is one of the key chemokines that regulate migration and infiltration of monocytes/macrophages. Both CCL2 and its receptor CCR2 have been demonstrated to be induced and involved in various diseases. Migration of monocytes from the blood stream across the vascular endothelium is required for routine immunological surveillance of tissues, as well as in response to inflammation.

Notable Publications

Author	Pubmed ID	Journal	Application
Katharina Steiner	35783100	Front Cell Neurosci	IF
Boqiang Wang	39893356	Biochem Genet	WB
Li Chen	39833479	Cell Mol Life Sci	WB, IHC

Storage

Storage:

Store at -20°C. Stable for one year after shipment.

Storage Buffer:

PBS with 0.02% sodium azide and 50% glycerol, pH7.3

Aliquoting is unnecessary for -20°C storage

*** 20ul sizes contain 0.1% BSA

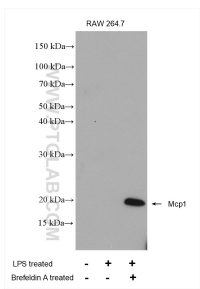
For technical support and original validation data for this product please contact:

T: 1 (888) 4PTGLAB (1-888-478-4522) (toll free in USA), or 1(312) 455-8498 (outside USA)

E: proteintech@ptglab.com
W: ptglab.com

This product is exclusively available under Proteintech Group brand and is not available to purchase from any other manufacturer.

Selected Validation Data



Untreated RAW 264.7 cells, RAW 264.7 cells (treated with 1 µg/ml LPS 20 hours then add 300 ng/ml Brefeldin A for 4hours) were subjected to SDS PAGE followed by western blot with 26161-1-AP (Mcp1 antibody) at dilution of 1:1000 incubated at room temperature for 1.5 hours.