

For Research Use Only

SLC13A3 Polyclonal antibody

Catalog Number: 26182-1-AP

2 Publications



Basic Information

Catalog Number:

26182-1-AP

Size:

150ul, Concentration: 650 ug/ml by Nanodrop and 347 ug/ml by Bradford method using BSA as the standard;

Source:

Rabbit

Isotype:

IgG

Immunogen Catalog Number:

AG24183

GenBank Accession Number:

BC035966

GeneID (NCBI):

64849

UNIPROT ID:

Q8WWT9

Full Name:

solute carrier family 13 (sodium-dependent dicarboxylate transporter), member 3

Calculated MW:

602 aa, 67 kDa

Observed MW:

55-60 kDa

Purification Method:

Antigen affinity purification

Recommended Dilutions:

WB 1:500-1:2000

IHC 1:50-1:500

Applications

Tested Applications:

WB, IHC, ELISA

Cited Applications:

WB, IHC

Species Specificity:

human, mouse

Cited Species:

human

Note-IHC: suggested antigen retrieval with TE buffer pH 9.0; (*) Alternatively, antigen retrieval may be performed with citrate buffer pH 6.0

Positive Controls:

WB : mouse kidney tissue, HEK-293 cells

IHC : mouse kidney tissue,

Background Information

SLC13A3, also named NADC3 and SDCT2, belongs to the SLC13A/DASS transporter (TC 2.A.47) family and NADC subfamily. SLC13A3 encodes the plasma membrane Na⁺/Dicarboxylate Cotransporter 3 (NaDC3), which imports inside the cell four to six carbon dicarboxylates as well as N-acetylaspartate (NAA). SLC13A3 is mainly expressed in kidney, but also in brain, liver, placenta and eye (PMID: 30635937). This antibody detected the 55-60 kDa band in SDS-PAGE. However, the 55 kDa (nonglycosylated) and 85 kDa (glycosylated) bands have been reported in the article (PMID: 27053689).

Notable Publications

Author	Pubmed ID	Journal	Application
Anja Weber	30037119	Int J Mol Sci	WB
Chenxi Zhao	39442522	Cell Metab	IHC

Storage

Storage:

Store at -20°C. Stable for one year after shipment.

Storage Buffer:

PBS with 0.02% sodium azide and 50% glycerol pH 7.3.

Aliquoting is unnecessary for -20°C storage

*** 20ul sizes contain 0.1% BSA

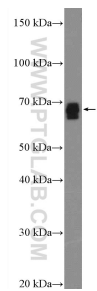
For technical support and original validation data for this product please contact:

T: 1 (888) 4PTGLAB (1-888-478-4522) (toll free in USA), or 1(312) 455-8498 (outside USA)

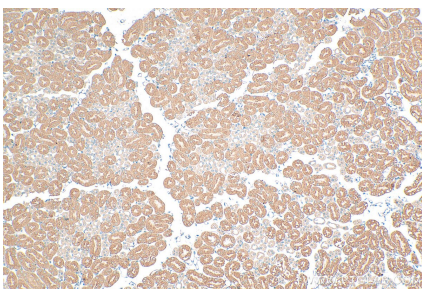
E: proteintech@ptglab.com
W: ptglab.com

This product is exclusively available under Proteintech Group brand and is not available to purchase from any other manufacturer.

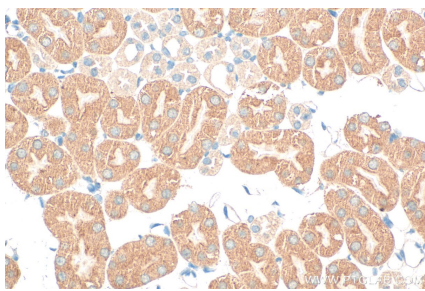
Selected Validation Data



mouse kidney tissue were subjected to SDS PAGE followed by western blot with 26182-1-AP (SLC13A3 Antibody) at dilution of 1:1000 incubated at room temperature for 1.5 hours.



Immunohistochemical analysis of paraffin-embedded mouse kidney tissue slide using 26182-1-AP (SLC13A3 antibody) at dilution of 1:200 (under 10x lens). Heat mediated antigen retrieval with Tris-EDTA buffer (pH 9.0).



Immunohistochemical analysis of paraffin-embedded mouse kidney tissue slide using 26182-1-AP (SLC13A3 antibody) at dilution of 1:200 (under 40x lens). Heat mediated antigen retrieval with Tris-EDTA buffer (pH 9.0).