

For Research Use Only

SNAI1 Polyclonal antibody

Catalog Number: 26183-1-AP

22 Publications



Basic Information

Catalog Number:

26183-1-AP

Size:

150ul, Concentration: 600 µg/ml by Nanodrop and 333 µg/ml by Bradford method using BSA as the standard;

Source:

Rabbit

Isotype:

IgG

Immunogen Catalog Number:

AG24248

GenBank Accession Number:

BC012910

GeneID (NCBI):

6615

UNIPROT ID:

O95863

Full Name:

snail homolog 1 (Drosophila)

Calculated MW:

264 aa, 29 kDa

Observed MW:

29-35 kDa

Purification Method:

Antigen affinity purification

Recommended Dilutions:

WB 1:500-1:2000

IF/ICC 1:50-1:500

Applications

Tested Applications:

WB, IF, ELISA

Cited Applications:

WB, IHC, IF, IP, CoIP

Species Specificity:

human, mouse

Cited Species:

human, mouse

Positive Controls:

WB : HeLa cells, NIH/3T3 cells, PC-3 cells

IF/ICC : HeLa cells,

Background Information

SNAI1, a member of SNAI1 family of protein, participates in the epithelial to mesenchymal transition (EMT) and formation and maintenance of embryonic mesoderm. The snail family share a common structural, that a highly conserved C-terminal region containing a zinc finger transcription factor. SNAI1 interacts with other corepressor, such as Ajuba, PRMT5 and SIN3a or HDAC1 and 2, to repress the target gene. As the phosphorylation modification of SNAI1 protein, the range of molecular weight of SNAI1 is about 25-30 kDa (PMID: 22276203). Once phosphorylated (probably on Ser-107, Ser-111, Ser-115 and Ser-119) it is exported from the nucleus to the cytoplasm where subsequent phosphorylation of the destruction motif and ubiquitination involving BTTC occurs.

Notable Publications

Author	Pubmed ID	Journal	Application
Huizhu Liu	28983614	Mol Med Rep	WB
Jingjing Wu	29077259	J Cell Mol Med	WB
Fan Feng	36284444	Cancer Med	WB

Storage

Storage:

Store at -20°C. Stable for one year after shipment.

Storage Buffer:

PBS with 0.02% sodium azide and 50% glycerol pH 7.3.

Aliquoting is unnecessary for -20°C storage

*** 20ul sizes contain 0.1% BSA

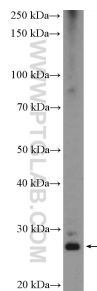
For technical support and original validation data for this product please contact:

T: 1 (888) 4PTGLAB (1-888-478-4522) (toll free in USA), or 1(312) 455-8498 (outside USA)

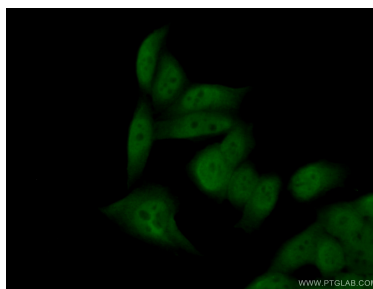
E: proteintech@ptglab.com
W: ptglab.com

This product is exclusively available under Proteintech Group brand and is not available to purchase from any other manufacturer.

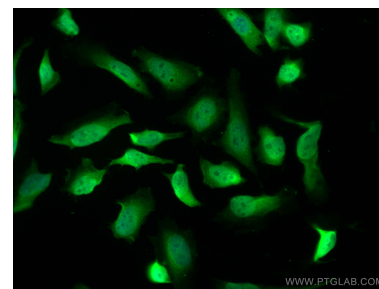
Selected Validation Data



HeLa cells were subjected to SDS PAGE followed by western blot with 26183-1-AP (SNAI1 Antibody) at dilution of 1:1000 incubated at room temperature for 1.5 hours.



Immunofluorescent analysis of (10% Formaldehyde) fixed HeLa cells using 26183-1-AP (SNAI1 antibody) at dilution of 1:50 and Alexa Fluor 488-conjugated Goat Anti-Rabbit IgG(H+L).



Immunofluorescent analysis of (4% PFA) fixed HeLa cells using SNAI1 antibody (26183-1-AP) at dilution of 1:400 and CoraLite®488-Conjugated AffiniPure Goat Anti-Rabbit IgG(H+L).