

For Research Use Only

# SLC13A3 Polyclonal antibody

Catalog Number: 26184-1-AP

2 Publications



## Basic Information

### Catalog Number:

26184-1-AP

### Size:

150ul, Concentration: 1200 ug/ml by Nanodrop and 480 ug/ml by Bradford method using BSA as the standard;

### Source:

Rabbit

### Isotype:

IgG

### Immunogen Catalog Number:

AG24182

### GenBank Accession Number:

BC035966

### GeneID (NCBI):

64849

### UNIPROT ID:

Q8WWT9

### Full Name:

solute carrier family 13 (sodium-dependent dicarboxylate transporter), member 3

### Calculated MW:

602 aa, 67 kDa

### Observed MW:

65-70 kDa

### Purification Method:

Antigen affinity purification

### Recommended Dilutions:

IP 0.5-4.0 ug for 1.0-3.0 mg of total protein lysate  
IHC 1:200-1:4000

## Applications

### Tested Applications:

IP, IHC, ELISA

### Cited Applications:

WB, IF

### Species Specificity:

human, mouse

### Cited Species:

human, rat

**Note-IHC: suggested antigen retrieval with TE buffer pH 9.0; (\*) Alternatively, antigen retrieval may be performed with citrate buffer pH 6.0**

### Positive Controls:

IP: mouse kidney tissue,

IHC: human kidney tissue,

## Background Information

SLC13A3, also named NADC3 and SDCT2, belongs to the SLC13A/DASS transporter (TC 2.A.47) family and NADC subfamily. SLC13A3 encodes the plasma membrane Na<sup>+</sup>/Dicarboxylate Cotransporter 3 (NaDC3), which imports inside the cell four to six carbon dicarboxylates as well as N-acetylaspartate (NAA). SLC13A3 is mainly expressed in kidney, but also in brain, liver, placenta and eye (PMID: 30635937).

## Notable Publications

Author	Pubmed ID	Journal	Application
Chao Chen	39116875	Dev Cell	WB,IF
Yuhui Zhu	38370865	Bioact Mater	WB

## Storage

### Storage:

Store at -20°C. Stable for one year after shipment.

### Storage Buffer:

PBS with 0.02% sodium azide and 50% glycerol pH 7.3.

Aliquoting is unnecessary for -20°C storage

\*\*\* 20ul sizes contain 0.1% BSA

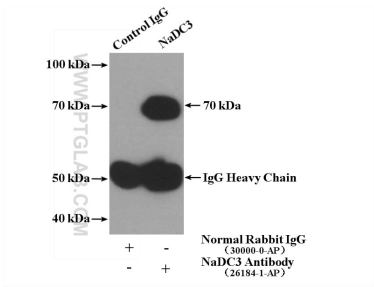
For technical support and original validation data for this product please contact:

T: 1 (888) 4PTGLAB (1-888-478-4522) (toll free in USA), or 1(312) 455-8498 (outside USA)

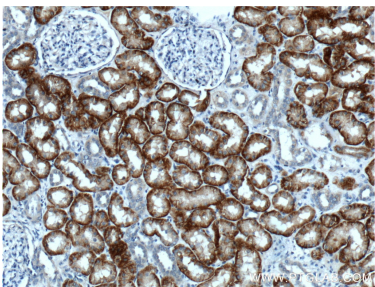
E: [proteintech@ptglab.com](mailto:proteintech@ptglab.com)  
W: [ptglab.com](http://ptglab.com)

This product is exclusively available under Proteintech Group brand and is not available to purchase from any other manufacturer.

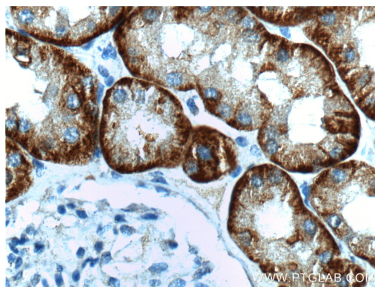
Selected Validation Data



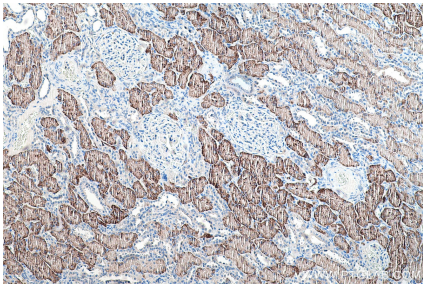
IP result of anti-SLC13A3 (IP:26184-1-AP, 4ug; Detection:26184-1-AP 1:500) with mouse kidney tissue lysate 4000ug.



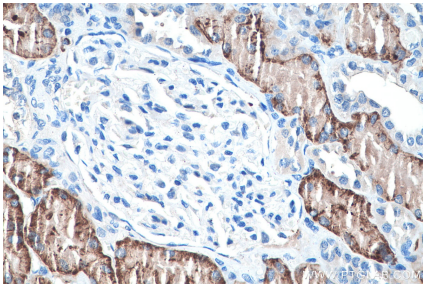
Immunohistochemical analysis of paraffin-embedded human kidney tissue slide using 26184-1-AP (NaDC3 antibody at dilution of 1:200 (under 10x lens).



Immunohistochemical analysis of paraffin-embedded human kidney tissue slide using 26184-1-AP (NaDC3 antibody at dilution of 1:200 (under 40x lens).



Immunohistochemical analysis of paraffin-embedded human kidney tissue slide using 26184-1-AP (SLC13A3 antibody) at dilution of 1:4000 (under 10x lens). Heat mediated antigen retrieval with Tris-EDTA buffer (pH 9.0).



Immunohistochemical analysis of paraffin-embedded human kidney tissue slide using 26184-1-AP (SLC13A3 antibody) at dilution of 1:4000 (under 40x lens). Heat mediated antigen retrieval with Tris-EDTA buffer (pH 9.0).