

For Research Use Only

# GLDN Polyclonal antibody

Catalog Number: 26185-1-AP

1 Publications



## Basic Information

Catalog Number:

26185-1-AP

Size:

150ul, Concentration: 650 ug/ml by Nanodrop and 400 ug/ml by Bradford method using BSA as the standard;

Source:

Rabbit

Isotype:

IgG

Immunogen Catalog Number:

AG24247

GenBank Accession Number:

BC113399

GeneID (NCBI):

342035

UNIPROT ID:

Q6ZMI3

Full Name:

gliomedin

Calculated MW:

551 aa, 59 kDa

Observed MW:

59 kDa

Purification Method:

Antigen affinity purification

Recommended Dilutions:

WB 1:500-1:2000

IHC 1:50-1:500

## Applications

Tested Applications:

WB, IHC, ELISA

Cited Applications:

IHC

Species Specificity:

human, mouse

Cited Species:

human

**Note-IHC: suggested antigen retrieval with TE buffer pH 9.0; (\*) Alternatively, antigen retrieval may be performed with citrate buffer pH 6.0**

Positive Controls:

WB : human placenta tissue,

IHC : human brain tissue,

## Notable Publications

Author	Pubmed ID	Journal	Application
Takumi Takeuchi	35328002	Genes (Basel)	IHC

## Storage

Storage:

Store at -20°C. Stable for one year after shipment.

Storage Buffer:

PBS with 0.02% sodium azide and 50% glycerol pH 7.3.

Aliquoting is unnecessary for -20°C storage

\*\*\* 20ul sizes contain 0.1% BSA

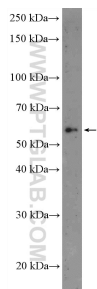
For technical support and original validation data for this product please contact:

T: 1 (888) 4PTGLAB (1-888-478-4522) (toll free in USA), or 1(312) 455-8498 (outside USA)

E: [proteintech@ptglab.com](mailto:proteintech@ptglab.com)  
W: [ptglab.com](http://ptglab.com)

This product is exclusively available under Proteintech Group brand and is not available to purchase from any other manufacturer.

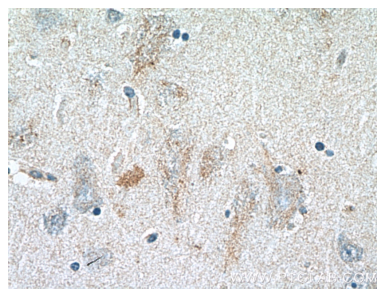
## Selected Validation Data



human placenta tissue were subjected to SDS PAGE followed by western blot with 26185-1-AP (GLDN Antibody) at dilution of 1:1000 incubated at room temperature for 1.5 hours.



Immunohistochemical analysis of paraffin-embedded human brain tissue slide using 26185-1-AP (GLDN Antibody) at dilution of 1:200 (under 10x lens).



Immunohistochemical analysis of paraffin-embedded human brain tissue slide using 26185-1-AP (GLDN Antibody) at dilution of 1:200 (under 40x lens).