

For Research Use Only

Gamma Tubulin Polyclonal antibody

Catalog Number: 26195-1-AP



Basic Information

| | | |
|--|--|---|
| Catalog Number: 26195-1-AP | GenBank Accession Number: BC000619 | Purification Method: Antigen affinity purification |
| Size: 150ul , Concentration: 600 ug/ml by Nanodrop and 287 ug/ml by Bradford method using BSA as the standard; | GeneID (NCBI): 7283 | Recommended Dilutions: WB 1:500-1:1000 IHC 1:50-1:500 IF/ICC 1:250-1:1000 |
| Source: Rabbit | UNIPROT ID: P23258 | |
| Isotype: IgG | Full Name: tubulin, gamma 1 | |
| Immunogen Catalog Number: AG23575 | Calculated MW: 51 kDa | |
| | Observed MW: 50-55 kDa | |

Applications

| | |
|--|--|
| Tested Applications: WB, IHC, IF/ICC, ELISA | Positive Controls: |
| Species Specificity: human, mouse, canine | WB : mouse brain tissue, HeLa cells |
| Note-IHC: suggested antigen retrieval with TE buffer pH 9.0; (*) Alternatively, antigen retrieval may be performed with citrate buffer pH 6.0 | IHC : human skin cancer tissue, |
| | IF/ICC : C2C12 cells, MDCK cells |

Background Information

Gamma tubulin is a member of tubulin superfamily and is a key component required for microtubule nucleation and stabilization. It is concentrated at the pericentriolar material of centrosomes in interphase cells, predominantly on spindle poles in mitotic cells, while found in midbodies during cytokinesis. Overexpression of gamma tubulin has been found in various cancers including breast cancer and gliomas. This antibody can well label the centrosome structure.

Storage

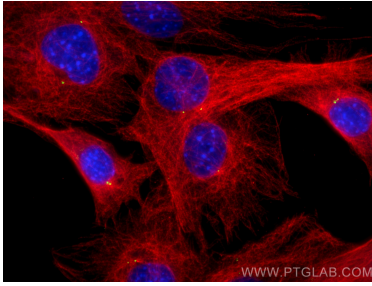
Storage:
Store at -20°C. Stable for one year after shipment.
Storage Buffer:
PBS with 0.02% sodium azide and 50% glycerol pH 7.3.
Aliquoting is unnecessary for -20°C storage

*** 20ul sizes contain 0.1% BSA

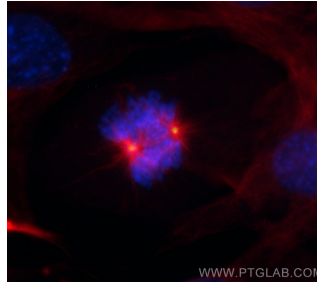
For technical support and original validation data for this product please contact:
T: 1 (888) 4PTGLAB (1-888-478-4522) (toll free in USA), or 1(312) 455-8498 (outside USA)
E: proteintech@ptglab.com
W: ptglab.com

This product is exclusively available under Proteintech Group brand and is not available to purchase from any other manufacturer.

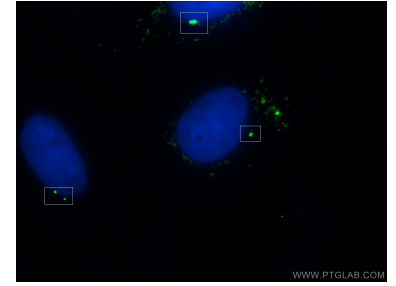
Selected Validation Data



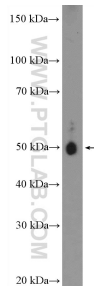
Immunofluorescent analysis of (4% PFA) fixed C2C12 cells using Gamma Tubulin antibody (26195-1-AP) at dilution of 1:500 and CoraLite®488-Conjugated AffiniPure Goat Anti-Rabbit IgG(H+L), Alpha Tubulin antibody (66031-1-Ig, Clone: 1E4C11, red).



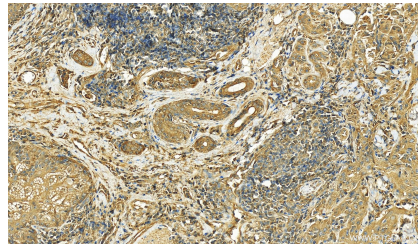
Immunofluorescent analysis of (4% PFA) fixed C2C12 cells using Gamma Tubulin antibody (26195-1-AP) at dilution of 1:500 and CoraLite®488-Conjugated AffiniPure Goat Anti-Rabbit IgG(H+L), Alpha Tubulin antibody (66031-1-Ig, Clone: 1E4C11, red).



Immunofluorescent analysis of (-20°C Ethanol) fixed MDCK cells using 26195-1-AP (gamma tubulin antibody) at dilution of 1:50 and Alexa Fluor 488-conjugated AffiniPure Goat Anti-Rabbit IgG(H+L).



mouse brain tissue were subjected to SDS PAGE followed by western blot with 26195-1-AP (gamma tubulin antibody at dilution of 1:600 incubated at room temperature for 1.5 hours.



Immunohistochemical analysis of paraffin-embedded skin cancer slide using 26195-1-AP (Gamma Tubulin antibody) at dilution of 1:200 (under 20x lens). Heat mediated antigen retrieval with Tris-EDTA buffer (pH 9.0).