

For Research Use Only

GLP1R Polyclonal antibody

Catalog Number: 26196-1-AP

Featured Product

16 Publications



Basic Information

Catalog Number: 26196-1-AP	GenBank Accession Number: BC112126	Purification Method: Antigen affinity purification
Size: 150ul, Concentration: 400 µg/ml by Nanodrop and 267 µg/ml by Bradford method using BSA as the standard;	GeneID (NCBI): 2740	Recommended Dilutions: WB 1:500-1:2000 IHC 1:50-1:500
Source: Rabbit	UNIPROT ID: P43220	
Isotype: IgG	Full Name: glucagon-like peptide 1 receptor	
Immunogen Catalog Number: AG23529	Calculated MW: 463 aa, 53 kDa	
	Observed MW: 53 kDa	

Applications

Tested Applications: WB, IHC, ELISA	Positive Controls:
Cited Applications: WB, IP, IF, IHC	WB: mouse pancreas tissue, rat pancreas tissue
Species Specificity: human, mouse, rat	IHC: mouse lung tissue,
Cited Species: human, rat, mouse	

Note-IHC: suggested antigen retrieval with TE buffer pH 9.0; (*) Alternatively, antigen retrieval may be performed with citrate buffer pH 6.0

Background Information

GLP1R (glucagon-like peptide-1 receptor) is a G protein-coupled receptor belonging to the secretin receptor superfamily, also known as class B (PMID:34911028). GLP1R is widely distributed in pancreatic islets, muscles, gastrointestinal tract, lung, liver, pancreas, and other tissues or organs (PMID:35989517). Moreover, GLP1R agonist has been reported to induce autophagy of EC (Endometrial carcinoma) cells, and high GLP1R expression may be associated with good prognosis of EC patients, suggesting that GLP1R is likely to participate in the progression of EC (PMID:29907137).

Notable Publications

Author	Pubmed ID	Journal	Application
Ran Li	36238196	Drug Des Devel Ther	WB
Qiuyu Wang	30301245	Int J Mol Sci	WB
Bing Cao	34817756	Metab Brain Dis	IF, WB

Storage

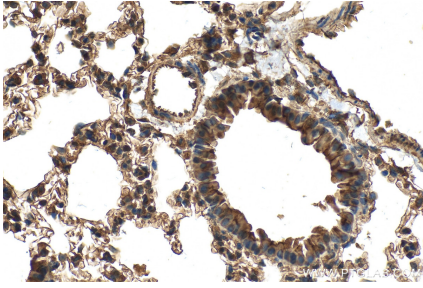
Storage:
Store at -20°C. Stable for one year after shipment.
Storage Buffer:
PBS with 0.02% sodium azide and 50% glycerol pH 7.3.
Aliquoting is unnecessary for -20°C storage

*** 20ul sizes contain 0.1%BSA

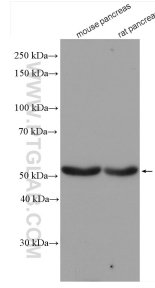
For technical support and original validation data for this product please contact:
T: 1 (888) 4PTGLAB (1-888-478-4522) (toll free in USA), or 1(312) 455-8498 (outside USA)
E: proteintech@ptglab.com
W: ptglab.com

This product is exclusively available under Proteintech Group brand and is not available to purchase from any other manufacturer.

Selected Validation Data



Immunohistochemical analysis of paraffin-embedded mouse lung tissue slide using 26196-1-AP (GLP1R antibody) at dilution of 1:200 (under 40x lens). Heat mediated antigen retrieval with Tris-EDTA buffer (pH 9.0).



Various lysates were subjected to SDS PAGE followed by western blot with 26196-1-AP (GLP1R antibody) at dilution of 1:1000 incubated at room temperature for 1.5 hours.