

For Research Use Only

GAB1 Polyclonal antibody

Catalog Number: 26200-1-AP **2 Publications**



Basic Information

| | | |
|---|--|--|
| Catalog Number: 26200-1-AP | GenBank Accession Number: BC064848 | Purification Method: Antigen affinity purification |
| Size: 150ul , Concentration: 600 µg/ml by Nanodrop; | GeneID (NCBI): 2549 | Recommended Dilutions: WB 1:1000-1:8000 |
| Source: Rabbit | Full Name: GRB2-associated binding protein 1 | |
| Isotype: IgG | Calculated MW: 724 aa, 80 kDa | |
| Immunogen Catalog Number: AG24395 | Observed MW: 110 kDa | |

Applications

| | |
|---|--|
| Tested Applications: WB, ELISA | Positive Controls: WB : HEK-293 cells, K-562 cells, C6 cells |
| Cited Applications: IF, WB | |
| Species Specificity: human, rat | |
| Cited Species: human | |

Background Information

Notable Publications

| Author | Pubmed ID | Journal | Application |
|-------------|-----------|------------------------|-------------|
| Nai-Jie Fu | 35307375 | Toxicol Appl Pharmacol | WB, IF |
| Hongwei Chu | 34932315 | Anal Chem | WB |

Storage

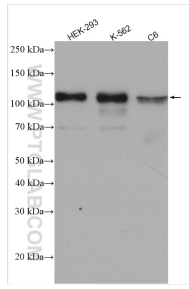
Storage:
Store at -20°C. Stable for one year after shipment.
Storage Buffer:
PBS with 0.02% sodium azide and 50% glycerol pH 7.3.
Aliquoting is unnecessary for -20°C storage

*** 20ul sizes contain 0.1% BSA

For technical support and original validation data for this product please contact:
T: 1 (888) 4PTGLAB (1-888-478-4522) (toll free in USA), or 1(312) 455-8498 (outside USA)
E: proteintech@ptglab.com
W: ptglab.com

This product is exclusively available under Proteintech Group brand and is not available to purchase from any other manufacturer.

Selected Validation Data



Various lysates were subjected to SDS PAGE followed by western blot with 26200-1-AP (GAB1 antibody) at dilution of 1:4000 incubated at room temperature for 1.5 hours.