

For Research Use Only

PNLIPRP2 Polyclonal antibody

Catalog Number: 26218-1-AP



Basic Information

Catalog Number:

26218-1-AP

Size:

150ul , Concentration: 1000 ug/ml by Nanodrop and 533 ug/ml by Bradford method using BSA as the standard;

Source:

Rabbit

Isotype:

IgG

Immunogen Catalog Number:

AG23967

GenBank Accession Number:

BC005989

GeneID (NCBI):

5408

UNIPROT ID:

P54317

Full Name:

pancreatic lipase-related protein 2

Observed MW:

52 kDa

Purification Method:

Antigen affinity purification

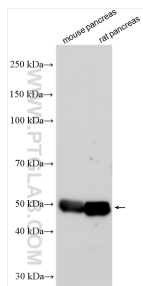
Recommended Dilutions:

WB 1:2000-1:10000

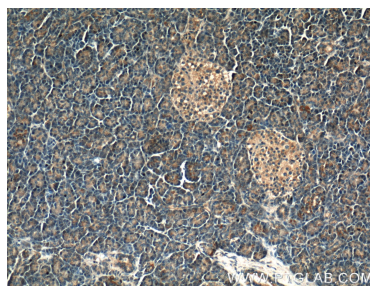
IHC 1:100-1:400

Applications

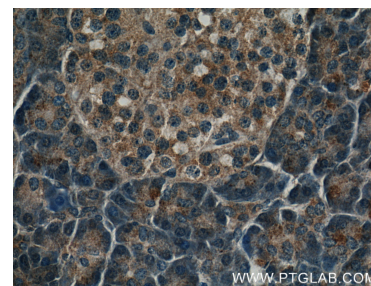
Selected Validation Data



Various lysates were subjected to SDS PAGE followed by western blot with 26218-1-AP (PNLI PRP2 antibody) at dilution of 1:5000 incubated at room temperature for 1.5 hours.



Immunohistochemical analysis of paraffin-embedded human pancreas tissue slide using 26218-1-AP (PNLI PRP2 Antibody) at dilution of 1:200 (under 10x lens).



Immunohistochemical analysis of paraffin-embedded human pancreas tissue slide using 26218-1-AP (PNLI PRP2 Antibody) at dilution of 1:200 (under 40x lens).