

For Research Use Only

DRC1 Polyclonal antibody

Catalog Number: 26219-1-AP



Basic Information

Catalog Number: 26219-1-AP	GenBank Accession Number: BC009488	Purification Method: Antigen affinity purification
Size: 150ul , Concentration: 600 ug/ml by Nanodrop;	GeneID (NCBI): 92749	Recommended Dilutions: WB 1:1000-1:6000 IF/ICC 1:50-1:500
Source: Rabbit	UNIPROT ID: Q96MC2	
Isotype: IgG	Full Name: chromosome 2 open reading frame 39	
Immunogen Catalog Number: AG24113	Observed MW: 87 kDa	

Applications

Tested Applications: WB, IF/ICC, ELISA	Positive Controls:
Species Specificity: human, mouse, rat	WB : mouse testis tissue, rat testis tissue IF/ICC : hTERT-RPE1 cells,

Background Information

DRC1, also known as C2orf39, CCDC164, has 3 coiled-coil motifs in its N-terminal half and an additional coiled-coil motif near its C terminus. DRC1 is a subunit of the nexin-dynein regulatory complex, an axonemal structure critical for the regulation of ciliary dynein motors. DRC1 is predominantly expressed in the lung, brain, and prostate (PMID: 23354437). DRC1 deficiency disrupts the assembly of the nexin-dynein regulatory complex, causing ciliary dyskinesia (PMID: 23354437, 34815526).

Storage

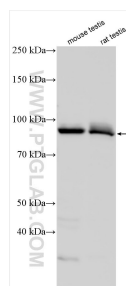
Storage:
Store at -20°C. Stable for one year after shipment.
Storage Buffer:
PBS with 0.02% sodium azide and 50% glycerol pH 7.3.
Aliquoting is unnecessary for -20°C storage

*** 20ul sizes contain 0.1% BSA

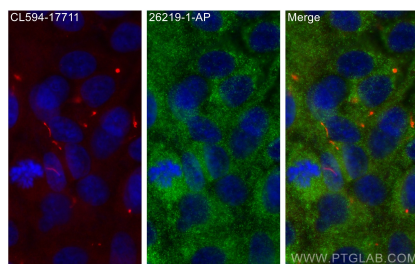
For technical support and original validation data for this product please contact:
T: 1 (888) 4PTGLAB (1-888-478-4522) (toll free in USA), or 1(312) 455-8498 (outside USA)
E: proteintech@ptglab.com
W: ptglab.com

This product is exclusively available under Proteintech Group brand and is not available to purchase from any other manufacturer.

Selected Validation Data



Various lysates were subjected to SDS PAGE followed by western blot with 26219-1-AP (DRC1 antibody) at dilution of 1:3000 incubated at room temperature for 1.5 hours.



Immunofluorescent analysis of (-20°C Methanol) fixed hTERT-RPE1 cells using DRC1 antibody (26219-1-AP) at dilution of 1:200 and CoraLite® 488-Conjugated AffiniPure Goat Anti-Rabbit IgG(H+L) (SA00013-2), CoraLite® 594 ARL13B antibody (CL594-17711, red).