

For Research Use Only

# ASPM Polyclonal antibody

Catalog Number: 26223-1-AP

Featured Product

18 Publications



## Basic Information

### Catalog Number:

26223-1-AP

### Size:

150ul, Concentration: 650 ug/ml by Nanodrop;

### Source:

Rabbit

### Isotype:

IgG

### Immunogen Catalog Number:

AG24166

### GenBank Accession Number:

BC034607

### GeneID (NCBI):

259266

### UNIPROT ID:

Q8IZT6

### Full Name:

asp (abnormal spindle) homolog, microcephaly associated (Drosophila)

### Calculated MW:

410 kDa or 218 kDa

### Observed MW:

218 kDa

### Purification Method:

Antigen affinity purification

### Recommended Dilutions:

WB 1:500-1:1000

IHC 1:50-1:500

IF/ICC 1:150-1:600

## Applications

### Tested Applications:

WB, IHC, IF/ICC, ELISA

### Cited Applications:

WB, IHC, IF, IP, CoIP

### Species Specificity:

human

### Cited Species:

human, mouse

**Note-IHC: suggested antigen retrieval with TE buffer pH 9.0; (\*) Alternatively, antigen retrieval may be performed with citrate buffer pH 6.0**

### Positive Controls:

WB: HEK-293T cells, K-562 cells

IHC: human prostate cancer tissue, human gliomas tissue, human ovary tumor tissue

IF/ICC: HeLa cells,

## Notable Publications

Author	Pubmed ID	Journal	Application
Chuanxin Zhang	36242049	J Ovarian Res	IF
Tianyu Wu	36395215	Science	IF
Lu Wang	34741399	Kaohsiung J Med Sci	WB, CoIP

## Storage

### Storage:

Store at -20°C. Stable for one year after shipment.

### Storage Buffer:

PBS with 0.02% sodium azide and 50% glycerol pH 7.3.

Aliquoting is unnecessary for -20°C storage

\*\*\* 20ul sizes contain 0.1% BSA

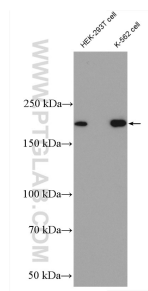
For technical support and original validation data for this product please contact:

T: 1 (888) 4PTGLAB (1-888-478-4522) (toll free in USA), or 1(312) 455-8498 (outside USA)

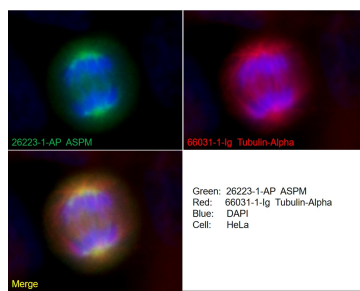
E: [proteintech@ptglab.com](mailto:proteintech@ptglab.com)  
W: [ptglab.com](http://ptglab.com)

This product is exclusively available under Proteintech Group brand and is not available to purchase from any other manufacturer.

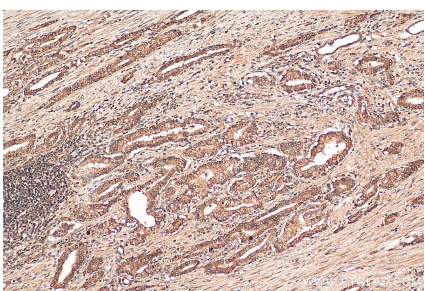
## Selected Validation Data



Various lysates were subjected to SDS PAGE followed by western blot with 26223-1-AP (ASPM antibody) at dilution of 1:600 incubated at room temperature for 1.5 hours.



Immunofluorescent analysis of (4% PFA) fixed HeLa cells using 26223-1-AP (ASPM antibody), at dilution of 1:300 and CoraLite®488-Conjugated Goat Anti-Rabbit IgG(H+L). Cells were co-stained with alpha tubulin (66031-1-Ig, red).



Immunohistochemical analysis of paraffin-embedded human prostate cancer tissue slide using 26223-1-AP (ASPM antibody) at dilution of 1:200 (under 10x lens). Heat mediated antigen retrieval with Tris-EDTA buffer (pH 9.0).