

For Research Use Only

# EDEM1 Polyclonal antibody

Catalog Number: 26226-1-AP **4 Publications**



## Basic Information

<b>Catalog Number:</b> 26226-1-AP	<b>GenBank Accession Number:</b> BC019088	<b>Purification Method:</b> Antigen affinity purification
<b>Size:</b> 150ul , Concentration: 800 µg/ml by Nanodrop and 367 µg/ml by Bradford method using BSA as the standard;	<b>GeneID (NCBI):</b> 9695	<b>Recommended Dilutions:</b> WB 1:500-1:1000 IP 0.5-4.0 ug for 1.0-3.0 mg of total protein lysate IHC 1:50-1:500
<b>Source:</b> Rabbit	<b>Full Name:</b> ER degradation enhancer, mannosidase alpha-like 1	
<b>Isotype:</b> IgG	<b>Calculated MW:</b> 74 kDa	
<b>Immunogen Catalog Number:</b> AG24046	<b>Observed MW:</b> 66-75 kDa	

## Applications

<b>Tested Applications:</b> IHC, IP, WB, ELISA	<b>Positive Controls:</b> WB : HepG2 cells, L02 cells, mouse liver, rat liver IP : mouse liver tissue, IHC : human liver cancer tissue,
<b>Cited Applications:</b> WB	
<b>Species Specificity:</b> human, mouse, rat	
<b>Cited Species:</b> human, mouse	
<b>Note-IHC: suggested antigen retrieval with TE buffer pH 9.0; (*) Alternatively, antigen retrieval may be performed with citrate buffer pH 6.0</b>	

## Background Information

### Notable Publications

Author	Pubmed ID	Journal	Application
Chengdong Liu	33110233	Oncogene	WB
Na Fu	33015132	Front Mol Biosci	WB
Nazli Khodayari	28419579	J Cell Biochem	WB

## Storage

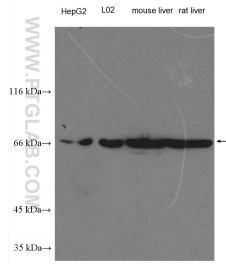
**Storage:**  
Store at -20°C. Stable for one year after shipment.  
**Storage Buffer:**  
PBS with 0.02% sodium azide and 50% glycerol pH 7.3.  
Aliquoting is unnecessary for -20°C storage

\*\*\* 20ul sizes contain 0.1% BSA

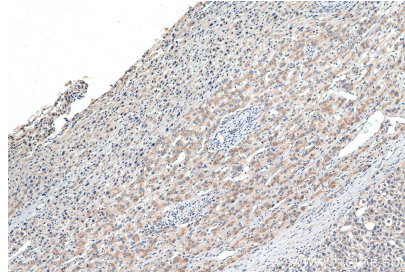
For technical support and original validation data for this product please contact:  
T: 1 (888) 4PTGLAB (1-888-478-4522) (toll free in USA), or 1(312) 455-8498 (outside USA)  
E: proteintech@ptglab.com  
W: ptglab.com

This product is exclusively available under Proteintech Group brand and is not available to purchase from any other manufacturer.

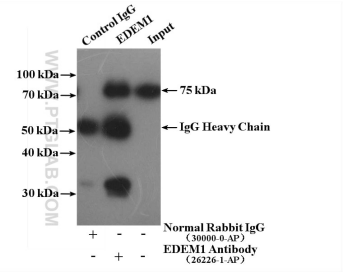
## Selected Validation Data



Various lysates were subjected to SDS PAGE followed by western blot with 26226-1-AP (EDEM1 Antibody) at dilution of 1:600 incubated at room temperature for 1.5 hours.



Immunohistochemical analysis of paraffin-embedded human liver cancer tissue slide using 26226-1-AP (EDEM1 antibody) at dilution of 1:200 (under 0x lens). Heat mediated antigen retrieval with Tris-EDTA buffer (pH 9.0).



IP Result of anti-EDEM1 (IP:26226-1-AP, 4ug; Detection:26226-1-AP 1:500) with mouse liver tissue lysate 4000ug.