

For Research Use Only

SCGB3A2 Polyclonal antibody

Catalog Number: 26228-1-AP

1 Publications



Basic Information

Catalog Number:

26228-1-AP

Size:

150ul , Concentration: 1300 ug/ml by Nanodrop and 600 ug/ml by Bradford method using BSA as the standard;

Source:

Rabbit

Isotype:

IgG

Immunogen Catalog Number:

AG23969

GenBank Accession Number:

BC024232

GeneID (NCBI):

117156

UNIPROT ID:

Q96PL1

Full Name:

secretoglobin, family 3A, member 2

Calculated MW:

10 kDa

Purification Method:

Antigen affinity purification

Recommended Dilutions:

IHC 1:50-1:500

Applications

Tested Applications:

IHC, ELISA

Cited Applications:

IHC

Species Specificity:

human

Cited Species:

human

Note-IHC: suggested antigen retrieval with TE buffer pH 9.0; (*) Alternatively, antigen retrieval may be performed with citrate buffer pH 6.0

Positive Controls:

IHC : human lung tissue,

Notable Publications

Author	Pubmed ID	Journal	Application
Zhanxian Shang	38972356	Mod Pathol	IHC

Storage

Storage:

Store at -20°C. Stable for one year after shipment.

Storage Buffer:

PBS with 0.02% sodium azide and 50% glycerol pH 7.3.

Aliquoting is unnecessary for -20°C storage

*** 20ul sizes contain 0.1% BSA

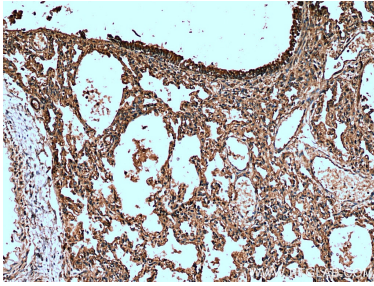
For technical support and original validation data for this product please contact:

T: 1 (888) 4PTGLAB (1-888-478-4522) (toll free in USA), or 1(312) 455-8498 (outside USA)

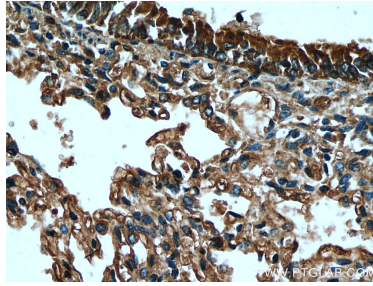
E: proteintech@ptglab.com
W: ptglab.com

This product is exclusively available under Proteintech Group brand and is not available to purchase from any other manufacturer.

Selected Validation Data



Immunohistochemical analysis of paraffin-embedded human lung tissue slide using 26228-1-AP (SCGB3A2 antibody) at dilution of 1:200 (under 10x lens). Heat mediated antigen retrieval with Tris-EDTA buffer (pH 9.0).



Immunohistochemical analysis of paraffin-embedded human lung tissue slide using 26228-1-AP (SCGB3A2 antibody) at dilution of 1:200 (under 40x lens). Heat mediated antigen retrieval with Tris-EDTA buffer (pH 9.0).