

For Research Use Only

CPO Polyclonal antibody

Catalog Number: 26232-1-AP



Basic Information

Catalog Number: 26232-1-AP	GenBank Accession Number: BC112078	Purification Method: Antigen affinity purification
Size: 150ul , Concentration: 650 ug/ml by Nanodrop;	GeneID (NCBI): 130749	Recommended Dilutions: WB: 1:500-1:3000
Source: Rabbit	UNIPROT ID: Q8IVL8	
Isotype: IgG	Full Name: carboxypeptidase O	
Immunogen Catalog Number: AG24059	Calculated MW: 374 aa, 43 kDa	
	Observed MW: 42 kDa	

Applications

Tested Applications: WB, ELISA	Positive Controls: WB : HEK-293 cells, MCF-7 cells, MDA-MB-231 cells
Species Specificity: human	

Background Information

CPO (Carboxypeptidase O) is a member of the M14 family of metallo-carboxypeptidases, belonging to the CPA subfamily. It is a GPI-anchored membrane-bound enzyme highly expressed on the brush-border membrane of intestinal epithelial cells. Unlike classical digestive carboxypeptidases such as CPA and CPB, which are secreted as inactive proenzymes, CPO is synthesized as an active enzyme without a prodomain. Its most distinctive biochemical feature is a strong substrate preference for C-terminal acidic amino acids, specifically glutamate and aspartate. This specificity distinguishes CPO from other family members. Its primary physiological role is to complete the digestion of dietary proteins by releasing acidic amino acids for efficient absorption in the small intestine.

Storage

Storage:
Store at -20°C. Stable for one year after shipment.
Storage Buffer:
PBS with 0.02% sodium azide and 50% glycerol, pH7.3
Aliquoting is unnecessary for -20°C storage

*** 20ul sizes contain 0.1% BSA

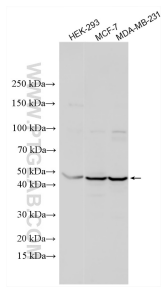
For technical support and original validation data for this product please contact:

T: 1 (888) 4PTGLAB (1-888-478-4522) (toll free in USA), or 1(312) 455-8498 (outside USA)

E: proteintech@ptglab.com
W: ptglab.com

This product is exclusively available under Proteintech Group brand and is not available to purchase from any other manufacturer.

Selected Validation Data



Various lysates were subjected to SDS PAGE followed by western blot with 26232-1-AP (CPO antibody) at dilution of 1:1500 incubated at room temperature for 1.5 hours.