

For Research Use Only

# PPAPDC2 Polyclonal antibody

Catalog Number: 26234-1-AP



## Basic Information

**Catalog Number:**

26234-1-AP

**Size:**

150ul , Concentration: 1100 ug/ml by Nanodrop and 400 ug/ml by Bradford method using BSA as the standard;

**Source:**

Rabbit

**Isotype:**

IgG

**Immunogen Catalog Number:**

AG23856

**GenBank Accession Number:**

BC038108

**GeneID (NCBI):**

403313

**UNIPROT ID:**

Q8IY26

**Full Name:**

phosphatidic acid phosphatase type 2 domain containing 2

**Observed MW:**

32 kDa

**Purification Method:**

Antigen affinity purification

**Recommended Dilutions:**

IP 0.5-4.0 ug for 1.0-3.0 mg of total protein lysate  
IF/ICC 1:50-1:500

## Applications

**Tested Applications:**

IF/ICC, IP, ELISA

**Species Specificity:**

human

**Positive Controls:**

IP : HepG2 cells,

IF/ICC : L02 cells,

## Storage

**Storage:**

Store at -20°C. Stable for one year after shipment.

**Storage Buffer:**

PBS with 0.02% sodium azide and 50% glycerol pH 7.3.

Aliquoting is unnecessary for -20°C storage

\*\*\* 20ul sizes contain 0.1% BSA

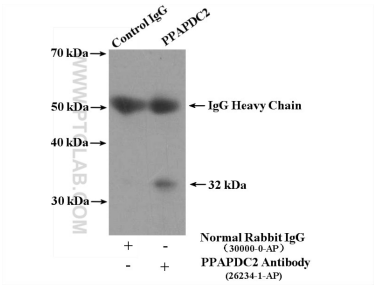
For technical support and original validation data for this product please contact:

T: 1 (888) 4PTGLAB (1-888-478-4522) (toll free in USA), or 1(312) 455-8498 (outside USA)

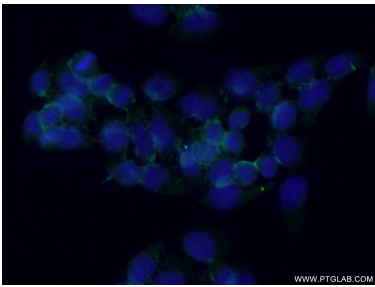
E: [proteintech@ptglab.com](mailto:proteintech@ptglab.com)  
W: [ptglab.com](http://ptglab.com)

This product is exclusively available under Proteintech Group brand and is not available to purchase from any other manufacturer.

Selected Validation Data



IP result of anti-PPAPDC2 (IP:26234-1-AP, 4ug; Detection:26234-1-AP 1:300) with HepG2 cells lysate 3600ug.



Immunofluorescent analysis of (-20°C Ethanol) fixed L02 cells using 26234-1-AP (PPAPDC2 antibody) at dilution of 1:50 and Alexa Fluor 488-conjugated Goat Anti-Rabbit IgG(H+L).