

For Research Use Only

# ZC3H15 Polyclonal antibody

Catalog Number: 26241-1-AP

Featured Product



## Basic Information

<b>Catalog Number:</b> 26241-1-AP	<b>GenBank Accession Number:</b> BC021102	<b>Purification Method:</b> Antigen affinity purification
<b>Size:</b> 150ul , Concentration: 350 µg/ml by Nanodrop and 200 µg/ml by Bradford method using BSA as the standard;	<b>GeneID (NCBI):</b> 55854	<b>Recommended Dilutions:</b> WB 1:500-1:2000 IHC 1:250-1:1000 IF 1:200-1:800
<b>Source:</b> Rabbit	<b>Full Name:</b> zinc finger CCH-type containing 15	
<b>Isotype:</b> IgG	<b>Observed MW:</b> 50-55 kDa	
<b>Immunogen Catalog Number:</b> AG24091		

## Applications

**Tested Applications:**  
IF, IHC, WB, ELISA

**Species Specificity:**  
human

**Note-IHC: suggested antigen retrieval with TE buffer pH 9.0; (\*) Alternatively, antigen retrieval may be performed with citrate buffer pH 6.0**

**Positive Controls:**

**WB :** HeLa cells, K-562 cells, HL-60 cells

**IHC :** human cervical cancer tissue,

**IF :** U2OS cells, HeLa cells

## Background Information

### Storage

**Storage:**  
Store at -20°C. Stable for one year after shipment.  
**Storage Buffer:**  
PBS with 0.02% sodium azide and 50% glycerol pH 7.3.  
Aliquoting is unnecessary for -20°C storage

\*\*\* 20ul sizes contain 0.1% BSA

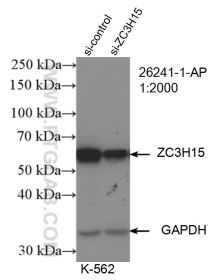
For technical support and original validation data for this product please contact:

T: 1 (888) 4PTGLAB (1-888-478-4522) (toll free in USA), or 1(312) 455-8498 (outside USA)

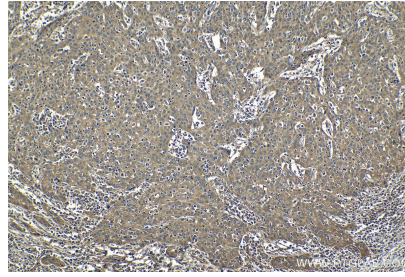
E: [proteintech@ptglab.com](mailto:proteintech@ptglab.com)  
W: [ptglab.com](http://ptglab.com)

This product is exclusively available under Proteintech Group brand and is not available to purchase from any other manufacturer.

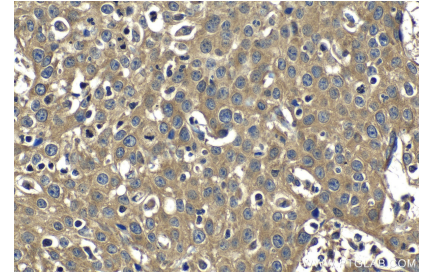
## Selected Validation Data



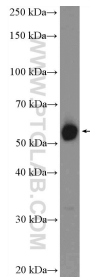
WB result of ZC3H15 antibody (26241-1-AP; 1:2000; incubated at room temperature for 1.5 hours) with sh-Control and sh-ZC3H15 transfected K-562 cells.



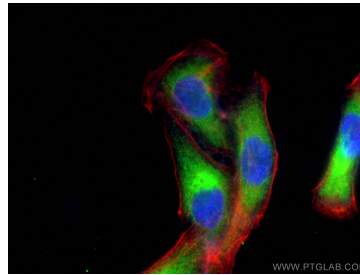
Immunohistochemical analysis of paraffin-embedded human cervical cancer tissue slide using 26241-1-AP (ZC3H15 antibody) at dilution of 1:500 (under 10x lens). Heat mediated antigen retrieval with Tris-EDTA buffer (pH 9.0).



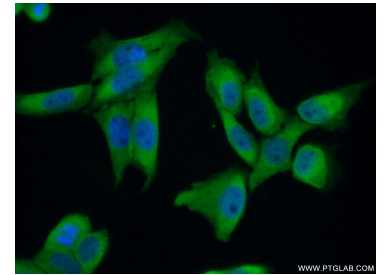
Immunohistochemical analysis of paraffin-embedded human cervical cancer tissue slide using 26241-1-AP (ZC3H15 antibody) at dilution of 1:500 (under 40x lens). Heat mediated antigen retrieval with Tris-EDTA buffer (pH 9.0).



HeLa cells were subjected to SDS PAGE followed by western blot with 26241-1-AP (ZC3H15 Antibody) at dilution of 1:1000 incubated at room temperature for 1.5 hours.



Immunofluorescent analysis of (-20°C Ethanol) fixed U2OS cells using ZC3H15 antibody (26241-1-AP) at dilution of 1:400 and CoraLite® 488-Conjugated AffiniPure Goat Anti-Rabbit IgG(H+L), CL594-Phalloidin (red).



Immunofluorescent analysis of (10% Formaldehyde) fixed HeLa cells using 26241-1-AP (ZC3H15 antibody) at dilution of 1:50 and Alexa Fluor 488-conjugated AffiniPure Goat Anti-Rabbit IgG(H+L).