

For Research Use Only

GIT1 Polyclonal antibody

Catalog Number: 26247-1-AP



Basic Information

Catalog Number: 26247-1-AP	GenBank Accession Number: BC067358	Purification Method: Antigen affinity purification
Size: 150ul , Concentration: 300 µg/ml by Nanodrop and 233 µg/ml by Bradford method using BSA as the standard;	GeneID (NCBI): 28964	Recommended Dilutions: WB 1:500-1:2000
Source: Rabbit	Full Name: G protein-coupled receptor kinase interacting ArfGAP 1	
Isotype: IgG	Calculated MW: 694 aa, 77 kDa	
Immunogen Catalog Number: AG24648		

Applications

Tested Applications: WB, ELISA	Positive Controls: WB : ROS1728 cells,
Species Specificity: human, rat	

Background Information

Storage

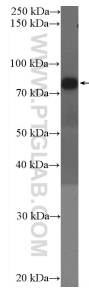
Storage:
Store at -20°C. Stable for one year after shipment.
Storage Buffer:
PBS with 0.02% sodium azide and 50% glycerol pH 7.3.
Aliquoting is unnecessary for -20°C storage

*** 20ul sizes contain 0.1% BSA

For technical support and original validation data for this product please contact:
T: 1 (888) 4PTGLAB (1-888-478-4522) (toll free in USA), or 1(312) 455-8498 (outside USA)
E: proteintech@ptglab.com
W: ptglab.com

This product is exclusively available under Proteintech Group brand and is not available to purchase from any other manufacturer.

Selected Validation Data



ROS1728 cells were subjected to SDS PAGE followed by western blot with 26247-1-AP (GIT1 Antibody) at dilution of 1:1000 incubated at room temperature for 1.5 hours.