

For Research Use Only

TAOK1 Polyclonal antibody

Catalog Number: 26250-1-AP

Featured Product

7 Publications



Basic Information

Catalog Number:

26250-1-AP

Size:

150ul, Concentration: 1000 ug/ml by Nanodrop and 480 ug/ml by Bradford method using BSA as the standard;

Source:

Rabbit

Isotype:

IgG

Immunogen Catalog Number:

AG22461

GenBank Accession Number:

BC133039

GeneID (NCBI):

57551

UNIPROT ID:

Q7L7X3

Full Name:

TAO kinase 1

Calculated MW:

1001 aa, 116 kDa

Observed MW:

116 kDa

Purification Method:

Antigen affinity purification

Recommended Dilutions:

WB 1:500-1:1000

IHC 1:100-1:500

IF/ICC 1:20-1:200

Applications

Tested Applications:

WB, IHC, IF/ICC, ELISA

Cited Applications:

WB, IF, IHC

Species Specificity:

human, mouse

Cited Species:

human, mouse, monkey

Note-IHC: suggested antigen retrieval with TE buffer pH 9.0; (*) Alternatively, antigen retrieval may be performed with citrate buffer pH 6.0

Positive Controls:

WB : HeLa cells, mouse testis tissue

IHC : human liver tissue,

IF/ICC : HeLa cells,

Background Information

Thousand and one kinase 1 (TAOK1), also known as prostate-derived sterile 20 (Ste20)-like kinase 2, TAO1 (thousand and one amino-acid protein 1) or MARKK, is a member of the MAP3K protein kinase and belongs to the germinal-center kinase-like class of sterile 20 (Ste20)-like kinases (PMID: 29400705). TAOK1 is involved in mammalian brain development and functions as a negative regulator in IL-17-mediated signaling and inflammation (PMID: 33565190). TAOK1 has a calculated molecular mass of 116 kDa and encodes a serine/threonine protein kinase at its N terminus.

Notable Publications

Author	Pubmed ID	Journal	Application
Caterina Giacomini	29730992	Acta Neuropathol Commun	WB, IF
Ritu Garg	32041905	J Cell Sci	WB
Neal Beeman	36595571	Sci Signal	IF

Storage

Storage:

Store at -20°C. Stable for one year after shipment.

Storage Buffer:

PBS with 0.02% sodium azide and 50% glycerol pH 7.3.

Aliquoting is unnecessary for -20°C storage

*** 20ul sizes contain 0.1% BSA

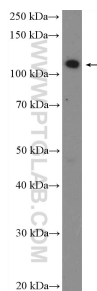
For technical support and original validation data for this product please contact:

T: 1 (888) 4PTGLAB (1-888-478-4522) (toll free in USA), or 1(312) 455-8498 (outside USA)

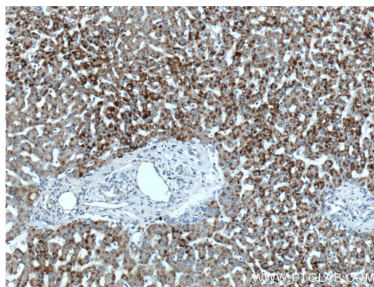
E: proteintech@ptglab.com
W: ptglab.com

This product is exclusively available under Proteintech Group brand and is not available to purchase from any other manufacturer.

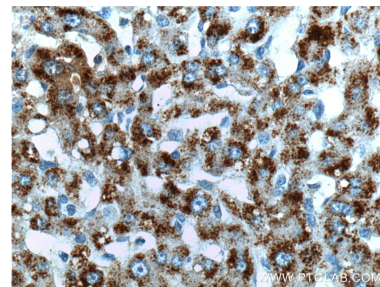
Selected Validation Data



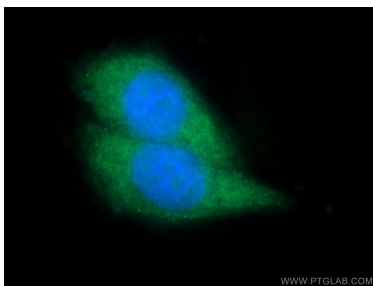
HeLa cells were subjected to SDS PAGE followed by western blot with 26250-1-AP (TAOK1 Antibody) at dilution of 1:600 incubated at room temperature for 1.5 hours.



Immunohistochemical analysis of paraffin-embedded human liver tissue slide using 26250-1-AP (TAOK1 Antibody) at dilution of 1:200 (under 10x lens).



Immunohistochemical analysis of paraffin-embedded human liver tissue slide using 26250-1-AP (TAOK1 Antibody) at dilution of 1:200 (under 40x lens).



Immunofluorescent analysis of (-20°C Ethanol) fixed HeLa cells using 26250-1-AP (TAOK1 antibody) at dilution of 1:50 and Alexa Fluor 488-conjugated Goat Anti-Rabbit IgG(H+L).