

For Research Use Only

# CHM Polyclonal antibody, PBS Only

Catalog Number: 26251-1-PBS



## Basic Information

<b>Catalog Number:</b> 26251-1-PBS	<b>GenBank Accession Number:</b> BC063522	<b>Purification Method:</b> Antigen affinity purification
<b>Size:</b> 100ug, Concentration: 1 mg/ml by Nanodrop;	<b>GeneID (NCBI):</b> 1121	
<b>Source:</b> Rabbit	<b>UNIPROT ID:</b> P24386	
<b>Isotype:</b> IgG	<b>Full Name:</b> choroideremia (Rab escort protein 1)	
<b>Immunogen Catalog Number:</b> AG23166	<b>Observed MW:</b> 95 kDa	

## Applications

**Tested Applications:**  
WB, IHC, IF/ICC, Indirect ELISA

**Species Specificity:**  
human

## Background Information

CHM (Choroideremia protein) is also named as Rab escort protein 1 (REP-1), TCD and Rab proteins geranylgeranyltransferase component A 1. Choroideremia (CHM) is an X-linked recessive eye disease that is caused by null mutations in REP-1, a gene involved in the regulation of Rab GTPases and intracellular vesicular transport (PMID: 9067750, PMID: 16936131). REP-1 is involved in trafficking of Rab proteins in the cell. And REP-1 binds newly synthesized Rab proteins and presents them to the catalytic site of RabGGTase (PMID: 19427510). RAB-27 in several neurons, such as motor neurons at neuromuscular junctions, requires REP-1 for normal synaptic transmission responsible for aldicarb sensitivity (PMID: 19090809). REP-1 acts as a component of the protein complex. There are two similar Rab escort proteins (75% sequence identity): REP-1 and REP-2. A 95-kDa protein (previously designated component A and now called REP-1) is present (PMID: 8294464, PMID: 17140818).

## Storage

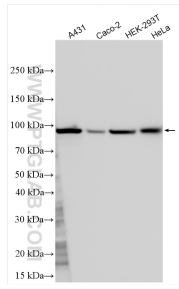
**Storage:**  
Store at -80°C.

**Storage Buffer:**  
PBS Only

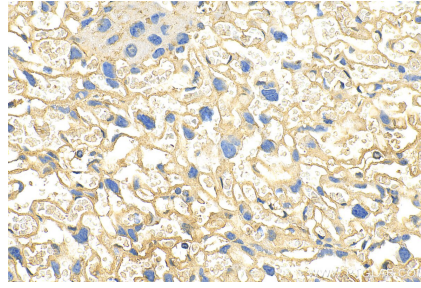
For technical support and original validation data for this product please contact:  
T: 1 (888) 4PTGLAB (1-888-478-4522) (toll free in USA), or 1(312) 455-8498 (outside USA)      E: proteintech@ptglab.com  
W: ptglab.com

This product is exclusively available under Proteintech Group brand and is not available to purchase from any other manufacturer.

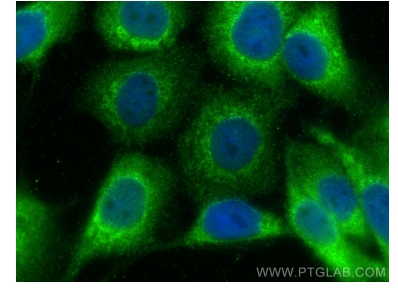
## Selected Validation Data



Various lysates were subjected to SDS PAGE followed by western blot with 26251-1-AP (CHM antibody) at dilution of 1:1500 incubated at room temperature for 1.5 hours. This data was developed using the same antibody clone with 26251-1-PBS in a different storage buffer formulation.



Immunohistochemical analysis of paraffin-embedded mouse placenta tissue slide using 26251-1-AP (CHM antibody) at dilution of 1:200 (under 40x lens). Heat mediated antigen retrieval with Tris-EDTA buffer (pH 9.0). This data was developed using the same antibody clone with 26251-1-PBS in a different storage buffer formulation.



Immunofluorescent analysis of (-20°C Methanol) fixed A431 cells using CHM antibody (26251-1-AP) at dilution of 1:400 and Multi-rAb CoraLite® Plus 488-Goat Anti-Rabbit Recombinant Secondary Antibody (H+L) (RGAR002). This data was developed using the same antibody clone with 26251-1-PBS in a different storage buffer formulation.