

For Research Use Only

SPC24 Polyclonal antibody

Catalog Number: 26268-1-AP

Featured Product

2 Publications



Basic Information

Catalog Number:

26268-1-AP

Size:

150ul, Concentration: 450 ug/ml by Nanodrop and 267 ug/ml by Bradford method using BSA as the standard;

Source:

Rabbit

Isotype:

IgG

Immunogen Catalog Number:

AG23256

GenBank Accession Number:

BC105037

GeneID (NCBI):

147841

UNIPROT ID:

Q8NBT2

Full Name:

SPC24, NDC80 kinetochore complex component, homolog (S. cerevisiae)

Observed MW:

26 kDa

Purification Method:

Antigen affinity purification

Recommended Dilutions:

WB 1:1000-1:4000

Applications

Tested Applications:

WB, ELISA

Cited Applications:

WB

Species Specificity:

human

Cited Species:

human

Positive Controls:

WB : HEK-293T cells, Hela cells, HepG2 cells

Notable Publications

Author	Pubmed ID	Journal	Application
Chengfang Sun	35028983	FASEB J	WB
Juan Zhou	30180968	Gene	WB

Storage

Storage:

Store at -20°C. Stable for one year after shipment.

Storage Buffer:

PBS with 0.02% sodium azide and 50% glycerol pH 7.3.

Aliquoting is unnecessary for -20°C storage

*** 20ul sizes contain 0.1% BSA

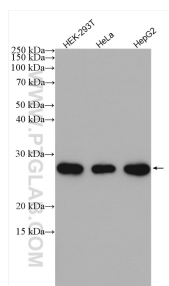
For technical support and original validation data for this product please contact:

T: 1 (888) 4PTGLAB (1-888-478-4522) (toll free in USA), or 1(312) 455-8498 (outside USA)

E: proteintech@ptglab.com
W: ptglab.com

This product is exclusively available under Proteintech Group brand and is not available to purchase from any other manufacturer.

Selected Validation Data



Various lysates were subjected to SDS PAGE followed by western blot with 26268-1-AP (SPC24 antibody) at dilution of 1:2000 incubated at room temperature for 1.5 hours.