

For Research Use Only

CCDC21 Polyclonal antibody

Catalog Number: 26314-1-AP **3 Publications**



Basic Information

Catalog Number: 26314-1-AP	GenBank Accession Number: BC064528	Purification Method: Antigen affinity purification
Size: 150ul , Concentration: 900 ug/ml by Nanodrop and 333 ug/ml by Bradford method using BSA as the standard;	GeneID (NCBI): 64793	Recommended Dilutions: WB 1:1000-1:4000
Source: Rabbit	UNIPROT ID: Q6P2H3	
Isotype: IgG	Full Name: coiled-coil domain containing 21	
Immunogen Catalog Number: AG23636	Observed MW: 85-90 kDa	

Applications

Tested Applications: WB, ELISA	Positive Controls: WB : HeLa cells, Jurkat cells
Cited Applications: WB, IF, IP	
Species Specificity: human	
Cited Species: human	

Background Information

CCDC21, also named as CEP85, is a Centrosomal protein with MW 85 kDa. All the isoforms of CCDC21 can be detected by this antibody.

Notable Publications

Author	Pubmed ID	Journal	Application
Canhe Chen	30611117	iScience	WB,IF,IP
Lin-Hui Zhai	39567751	Acta Pharmacol Sin	WB
Birol Cabukusta	33296653	Cell Rep	WB

Storage

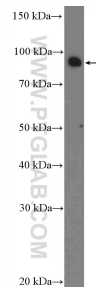
Storage:
Store at -20°C. Stable for one year after shipment.
Storage Buffer:
PBS with 0.02% sodium azide and 50% glycerol pH 7.3.
Aliquoting is unnecessary for -20°C storage

*** 20ul sizes contain 0.1% BSA

For technical support and original validation data for this product please contact:
T: 1 (888) 4PTGLAB (1-888-478-4522) (toll free in USA), or 1(312) 455-8498 (outside USA)
E: proteintech@ptglab.com
W: ptglab.com

This product is exclusively available under Proteintech Group brand and is not available to purchase from any other manufacturer.

Selected Validation Data



HeLa cells were subjected to SDS PAGE followed by western blot with 26314-1-AP (CCDC21 Antibody) at dilution of 1:2000 incubated at room temperature for 1.5 hours.