

For Research Use Only

C15orf38 Polyclonal antibody

Catalog Number: 26318-1-AP



Basic Information

Catalog Number:

26318-1-AP

Size:

150ul , Concentration: 550 ug/ml by Nanodrop and 400 ug/ml by Bradford method using BSA as the standard;

Source:

Rabbit

Isotype:

IgG

Immunogen Catalog Number:

AG23691

GenBank Accession Number:

BC053602

GeneID (NCBI):

348110

UNIPROT ID:

Q7Z6K5

Full Name:

chromosome 15 open reading frame 38

Observed MW:

30-35 kDa

Purification Method:

Antigen affinity purification

Recommended Dilutions:

WB 1:500-1:2000

Applications

Tested Applications:

WB, ELISA

Species Specificity:

human, mouse

Positive Controls:

WB : mouse liver tissue,

Storage

Storage:

Store at -20°C. Stable for one year after shipment.

Storage Buffer:

PBS with 0.02% sodium azide and 50% glycerol pH 7.3.

Aliquoting is unnecessary for -20°C storage

*** 20ul sizes contain 0.1% BSA

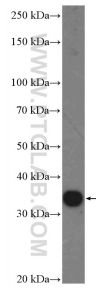
For technical support and original validation data for this product please contact:

T: 1 (888) 4PTGLAB (1-888-478-4522) (toll free in USA), or 1(312) 455-8498 (outside USA)

E: proteintech@ptglab.com
W: ptglab.com

This product is exclusively available under Proteintech Group brand and is not available to purchase from any other manufacturer.

Selected Validation Data



mouse liver tissue were subjected to SDS PAGE followed by western blot with 26318-1-AP (C15orf38 Antibody) at dilution of 1:1000 incubated at room temperature for 1.5 hours.