

For Research Use Only

C13orf3 Polyclonal antibody

Catalog Number: 26320-1-AP



Basic Information

Catalog Number: 26320-1-AP	GenBank Accession Number: BC048988	Purification Method: Antigen affinity purification
Size: 150ul , Concentration: 400 ug/ml by Nanodrop;	GeneID (NCBI): 221150	Recommended Dilutions: WB: 1:1000-1:4000
Source: Rabbit	UNIPROT ID: Q8IX90	
Isotype: IgG	Full Name: chromosome 13 open reading frame 3	
Immunogen Catalog Number: AG23684	Observed MW: 54 kDa	

Applications

Tested Applications: WB, ELISA	Positive Controls: WB : HEK-293T cells, HL-60 cells, Jurkat cells, K-562 cells
Species Specificity: human	

Background Information

C13orf3 (now known as Ska3) is a component of a spindle- and mitophore-associated protein complex that regulates microtubule attachment to the mitophore during mitosis. Ska3 is localized to the outer side of the mitophore during mitosis and may be essential for normal chromosome segregation. In addition, deletion of Ska3 results in a delay in mid-mitotic division and an inability to silence the spindle checkpoint or enter prophase. Accumulation of Ska3 is dependent on Sgo1 proteins, whereas mitotic accumulation of Sgo1 in prophase is not dependent on Ska3. The discovery of Ska3 further refines the function of the Ska complex, which plays an important role in mitotic progression and chromosome segregation. The discovery of Ska3 in the prophase of Sgo1 is a key factor in mitosis and chromosome segregation.

Storage

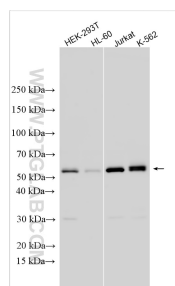
Storage:
Store at -20°C. Stable for one year after shipment.
Storage Buffer:
PBS with 0.02% sodium azide and 50% glycerol, pH7.3
Aliquoting is unnecessary for -20°C storage

*** 20ul sizes contain 0.1% BSA

For technical support and original validation data for this product please contact:
T: 1 (888) 4PTGLAB (1-888-478-4522) (toll free in USA), or 1(312) 455-8498 (outside USA)
E: proteintech@ptglab.com
W: ptglab.com

This product is exclusively available under Proteintech Group brand and is not available to purchase from any other manufacturer.

Selected Validation Data



Various lysates were subjected to SDS PAGE followed by western blot with 26320-1-AP (C13orf3 antibody) at dilution of 1:2000 incubated at room temperature for 1.5 hours.