

For Research Use Only

GPAT2 Polyclonal antibody, PBS Only

Catalog Number: 26328-1-PBS



Basic Information

Catalog Number:

26328-1-PBS

Size:

100ug, Concentration: 1 mg/ml by Nanodrop;

Source:

Rabbit

Isotype:

IgG

Immunogen Catalog Number:

AG23677

GenBank Accession Number:

BC068596

GeneID (NCBI):

150763

UNIPROT ID:

Q6NUI2

Full Name:

hypothetical protein LOC150763

Observed MW:

88 kDa

Purification Method:

Antigen affinity purification

Applications

Tested Applications:

WB, IP, Indirect ELISA

Species Specificity:

human, mouse, rat

Storage

Storage:

Store at -80°C.

Storage Buffer:

PBS only, pH7.3

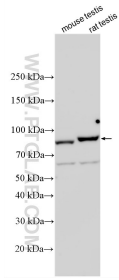
For technical support and original validation data for this product please contact:

T: 1 (888) 4PTGLAB (1-888-478-4522) (toll free in USA), or 1(312) 455-8498 (outside USA)

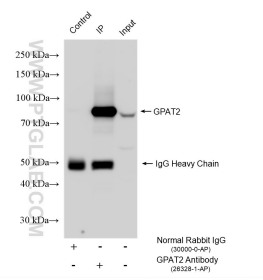
E: proteintech@ptglab.com
W: ptglab.com

This product is exclusively available under Proteintech Group brand and is not available to purchase from any other manufacturer.

Selected Validation Data



Various lysates were subjected to SDS PAGE followed by western blot with 26328-1-AP (GPAT2 antibody) at dilution of 1:5000 incubated at room temperature for 1.5 hours. This data was developed using the same antibody clone with 26328-1-PBS in a different storage buffer formulation.



IP result of anti-GPAT2 (IP:26328-1-AP, 4ug; Detection:26328-1-AP 1:1000) with rat testis tissue lysate 1800 ug. This data was developed using the same antibody clone with 26328-1-PBS in a different storage buffer formulation.