

For Research Use Only

FAM134C Polyclonal antibody

Catalog Number: 26330-1-AP



Basic Information

Catalog Number: 26330-1-AP	GenBank Accession Number: BC049370	Purification Method: Antigen affinity purification
Size: 150ul , Concentration: 600 µg/ml by Nanodrop;	GeneID (NCBI): 162427	Recommended Dilutions: WB 1:500-1:1000
Source: Rabbit	Full Name: family with sequence similarity 134, member C	
Isotype: IgG	Observed MW: 65 kDa	
Immunogen Catalog Number: AG23680		

Applications

Tested Applications: WB, ELISA	Positive Controls: WB : HEK-293T cells, HeLa cells, HuH-7 cells
Species Specificity: human	

Background Information

The protein family with sequence similarity 134 (FAM134) comprises three proteins: FAM134B, FAM134A, and FAM134C. These proteins share the same LIR amino acid sequence. FAM134C, also known as the reticulophagy regulator 3 (RETREG3), plays a crucial role as an ER-phagy receptor. It is essential for maintaining ER morphology in a LC3-interacting region (LIR)-dependent manner.

Storage

Storage:
Store at -20°C. Stable for one year after shipment.
Storage Buffer:
PBS with 0.02% sodium azide and 50% glycerol pH 7.3.
Aliquoting is unnecessary for -20°C storage

*** 20ul sizes contain 0.1% BSA

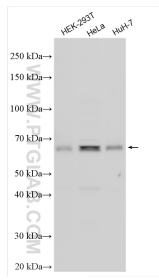
For technical support and original validation data for this product please contact:

T: 1 (888) 4PTGLAB (1-888-478-4522) (toll free in USA), or 1(312) 455-8498 (outside USA)

E: proteintech@ptglab.com
W: ptglab.com

This product is exclusively available under Proteintech Group brand and is not available to purchase from any other manufacturer.

Selected Validation Data



Various lysates were subjected to SDS PAGE followed by western blot with 26330-1-AP (FAM134C antibody) at dilution of 1:800 incubated at room temperature for 1.5 hours.