

For Research Use Only

AE2 Polyclonal antibody

Catalog Number: 26332-1-AP

1 Publications



Basic Information

Catalog Number:

26332-1-AP

Size:

150ul, Concentration: 1200 ug/ml by Nanodrop and 533 ug/ml by Bradford method using BSA as the standard;

Source:

Rabbit

Isotype:

IgG

Immunogen Catalog Number:

AG23673

GenBank Accession Number:

BC028601

GeneID (NCBI):

6522

UNIPROT ID:

P04920

Full Name:

solute carrier family 4, anion exchanger, member 2 (erythrocyte membrane protein band 3-like 1)

Calculated MW:

1241 aa, 137 kDa

Observed MW:

150 and 70 kDa

Purification Method:

Antigen affinity purification

Recommended Dilutions:

WB 1:500-1:1000

IHC 1:200-1:800

Applications

Tested Applications:

WB, IHC, ELISA

Cited Applications:

WB

Species Specificity:

human

Cited Species:

human

Note-IHC: suggested antigen retrieval with TE buffer pH 9.0; (*) Alternatively, antigen retrieval may be performed with citrate buffer pH 6.0

Positive Controls:

WB : A549 cells, HeLa cells

IHC : human liver cancer tissue, human lung cancer tissue

Background Information

SLC4A2, also named as AE2, encodes a Cl⁻/HCO₃⁻ exchanger. It has been reported that the reduced expression of SLC4A2 found in the liver and peripheral blood mononuclear cells of patients may be associated with the hypermethylation of SLC4A2 promoter regions, which might contribute to the pathogenesis of primary biliary cholangitis (PBC). 26332-1-AP antibody detects 150 kDa and 70 kDa (XP_006716157, 666aa) protein in SDS-PAGE. (PMID: 23341620, 32039364)

Notable Publications

Author	Pubmed ID	Journal	Application
Eunus S Ali	35772404	Mol Cell	WB

Storage

Storage:

Store at -20°C. Stable for one year after shipment.

Storage Buffer:

PBS with 0.02% sodium azide and 50% glycerol pH 7.3.

Aliquoting is unnecessary for -20°C storage

*** 20ul sizes contain 0.1% BSA

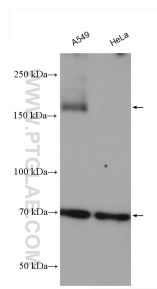
For technical support and original validation data for this product please contact:

T: 1 (888) 4PTGLAB (1-888-478-4522) (toll free in USA), or 1(312) 455-8498 (outside USA)

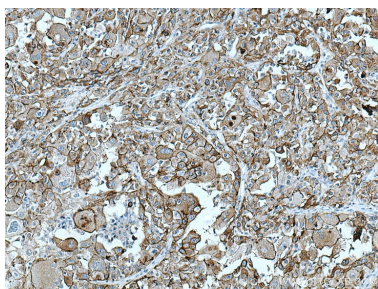
E: proteintech@ptglab.com
W: ptglab.com

This product is exclusively available under Proteintech Group brand and is not available to purchase from any other manufacturer.

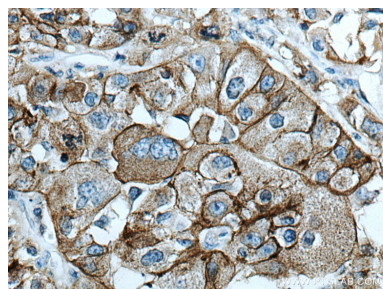
Selected Validation Data



Various lysates were subjected to SDS PAGE followed by western blot with 26332-1-AP (AE2 antibody) at dilution of 1:800 incubated at room temperature for 1.5 hours.



Immunohistochemical analysis of paraffin-embedded human liver cancer tissue slide using 26332-1-AP (AE2 antibody) at dilution of 1:400 (under 10x lens). Heat mediated antigen retrieval with Tris-EDTA buffer (pH 9.0).



Immunohistochemical analysis of paraffin-embedded human liver cancer tissue slide using 26332-1-AP (AE2 antibody) at dilution of 1:400 (under 40x lens). Heat mediated antigen retrieval with Tris-EDTA buffer (pH 9.0).