

For Research Use Only

# CCDC66 Polyclonal antibody

Catalog Number: 26333-1-AP



## Basic Information

<b>Catalog Number:</b> 26333-1-AP	<b>GenBank Accession Number:</b> BC132827	<b>Purification Method:</b> Antigen affinity purification
<b>Size:</b> 150ul , Concentration: 780 ug/ml by Nanodrop;	<b>GeneID (NCBI):</b> 285331	<b>Recommended Dilutions:</b> WB: 1:500-1:3000
<b>Source:</b> Rabbit	<b>UNIPROT ID:</b> A2RUB6	
<b>Isotype:</b> IgG	<b>Full Name:</b> coiled-coil domain containing 66	
<b>Immunogen Catalog Number:</b> AG23421	<b>Observed MW:</b> 105-125 kDa	

## Applications

<b>Tested Applications:</b> WB, ELISA	<b>Positive Controls:</b> WB : LNCaP cells,
<b>Species Specificity:</b> human	

## Background Information

CCDC66 is a MAP that localizes to the centriolar satellites, the centrosome and the primary cilium and is linked in ciliopathies affecting retina and brain. It interacts with the ciliopathy proteins CEP104 and CSPP1 and controls axonemal elongation (PMID: 36606424). CCDC66 is required for the basal body recruitment of transition zone proteins and intraflagellar transport B (IFT-B) machinery.

## Storage

**Storage:**  
Store at -20°C. Stable for one year after shipment.  
**Storage Buffer:**  
PBS with 0.02% sodium azide and 50% glycerol, pH7.3  
Aliquoting is unnecessary for -20°C storage

\*\*\* 20ul sizes contain 0.1% BSA

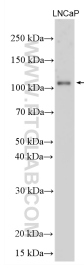
For technical support and original validation data for this product please contact:

T: 1 (888) 4PTGLAB (1-888-478-4522) (toll free in USA), or 1(312) 455-8498 (outside USA)

E: [proteintech@ptglab.com](mailto:proteintech@ptglab.com)  
W: [ptglab.com](http://ptglab.com)

This product is exclusively available under Proteintech Group brand and is not available to purchase from any other manufacturer.

## Selected Validation Data



LNCaP cells were subjected to SDS PAGE followed by western blot with 26333-1-AP (CCDC66 antibody) at dilution of 1:1500 incubated at room temperature for 1.5 hours.