

For Research Use Only

C19orf21 Polyclonal antibody

Catalog Number: 26338-1-AP **4 Publications**



Basic Information

Catalog Number: 26338-1-AP	GenBank Accession Number: BC052236	Purification Method: Antigen affinity purification
Size: 150ul , Concentration: 600 µg/ml by Nanodrop and 333 µg/ml by Bradford method using BSA as the standard;	GeneID (NCBI): 126353	Recommended Dilutions: WB 1:1000-1:4000 IF 1:50-1:500
Source: Rabbit	UNIPROT ID: Q8IVT2	
Isotype: IgG	Full Name: chromosome 19 open reading frame 21	
Immunogen Catalog Number: AG23712	Observed MW: 75 kDa	

Applications

Tested Applications: WB, IF, ELISA	Positive Controls: WB : MCF-7 cells, HepG2 cells IF : HepG2 cells,
Cited Applications: WB, IP, IF	
Species Specificity: human	
Cited Species: human, mouse	

Background Information

C19orf21, also named as MISP, plays a role in mitotic spindle orientation and mitotic progression. It may be required for directed cell migration and centrosome orientation. C19orf21 regulates the distribution of dynactin at the cell cortex in a PLK1-dependent manner.

Notable Publications

Author	Pubmed ID	Journal	Application
Xinyang Huang	35433491	Front Oncol	WB
Bin Zhou	34226533	Cell Death Discov	WB
Koki Hiura	36596561	J Vet Med Sci	WB,IF

Storage

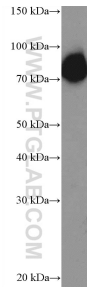
Storage:
Store at -20°C. Stable for one year after shipment.
Storage Buffer:
PBS with 0.02% sodium azide and 50% glycerol pH 7.3.
Aliquoting is unnecessary for -20°C storage

*** 20ul sizes contain 0.1% BSA

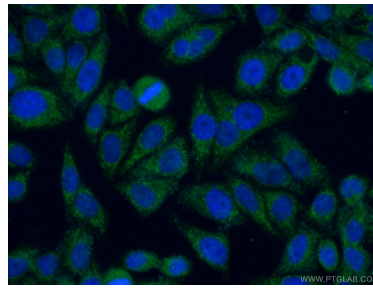
For technical support and original validation data for this product please contact:
T: 1 (888) 4PTGLAB (1-888-478-4522) (toll free in USA), or 1(312) 455-8498 (outside USA)
E: proteintech@ptglab.com
W: ptglab.com

This product is exclusively available under Proteintech Group brand and is not available to purchase from any other manufacturer.

Selected Validation Data



MCF-7 cells were subjected to SDS PAGE followed by western blot with 26338-1-AP (C19orf21 Antibody) at dilution of 1:2000 incubated at room temperature for 1.5 hours.



Immunofluorescent analysis of (4% PFA) fixed HepG2 cells using 26338-1-AP (C19orf21 antibody) at dilution of 1:50 and Alexa Fluor 488-conjugated AffiniPure Goat Anti-Rabbit IgG(H+L).