

For Research Use Only

LRRC42 Polyclonal antibody

Catalog Number: 26348-1-AP



Basic Information

Catalog Number: 26348-1-AP	GenBank Accession Number: BC013101	Purification Method: Antigen affinity purification
Size: 150ul , Concentration: 510 ug/ml by Nanodrop;	GeneID (NCBI): 115353	Recommended Dilutions: WB: 1:1000-1:8000
Source: Rabbit	UNIPROT ID: Q9Y546	
Isotype: IgG	Full Name: leucine rich repeat containing 42	
Immunogen Catalog Number: AG23710	Observed MW: 45-48 kDa	

Applications

Tested Applications: WB, ELISA	Positive Controls: WB : A431 cells, K-562 cells, SH-SY5Y cells, SK-N-SH cells
Species Specificity: human	

Background Information

LRRC42 (Leucine-Rich Repeating-Containing Protein 42) is a human protein, which is encoded by LRRC 42 gene and contains leucine-rich repetitive sequences. This protein exists in human body and is considered as a potential biomarker in many tumor types, which is involved in the key cellular process of cancer development and may be related to immune cell infiltration.

Storage

Storage:
Store at -20°C. Stable for one year after shipment.
Storage Buffer:
PBS with 0.02% sodium azide and 50% glycerol, pH7.3
Aliquoting is unnecessary for -20°C storage

*** 20ul sizes contain 0.1% BSA

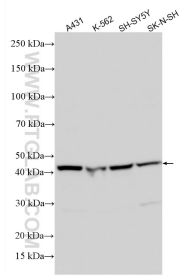
For technical support and original validation data for this product please contact:

T: 1 (888) 4PTGLAB (1-888-478-4522) (toll free in USA), or 1(312) 455-8498 (outside USA)

E: proteintech@ptglab.com
W: ptglab.com

This product is exclusively available under Proteintech Group brand and is not available to purchase from any other manufacturer.

Selected Validation Data



Various lysates were subjected to SDS PAGE followed by western blot with 26348-1-AP (LRRC42 antibody) at dilution of 1:4000 incubated at room temperature for 1.5 hours.