

For Research Use Only

# SLC25A36 Polyclonal antibody

Catalog Number: 26379-1-AP



## Basic Information

<b>Catalog Number:</b> 26379-1-AP	<b>GenBank Accession Number:</b> BC014064	<b>Purification Method:</b> Antigen affinity purification
<b>Size:</b> 150ul , Concentration: 450 ug/ml by Nanodrop;	<b>GeneID (NCBI):</b> 55186	<b>Recommended Dilutions:</b> WB 1:1000-1:6000 IF/ICC 1:200-1:800
<b>Source:</b> Rabbit	<b>UNIPROT ID:</b> Q96CQ1	
<b>Isotype:</b> IgG	<b>Full Name:</b> solute carrier family 25, member 36	
<b>Immunogen Catalog Number:</b> AG23894	<b>Observed MW:</b> 32-34 kDa	

## Applications

<b>Tested Applications:</b> WB, IF/ICC, ELISA	<b>Positive Controls:</b>
<b>Species Specificity:</b> human, mouse, rat	<b>WB :</b> mouse brain tissue, rat brain tissue <b>IF/ICC :</b> HepG2 cells,

## Background Information

SLC25A36 is a pyrimidine nucleotide carrier that belongs to the solute carrier family 25 (SLC25). SLC25A36 transports cytosine and uracil (deoxy)nucleosides monophosphate, diphosphate, and triphosphate via uniporter and antiporter(PMID: 25320081). It plays an important role in maintaining mitochondrial biogenesis. Loss of SLC25A36 in mouse embryonic stem cells (mESCs) is associated with mtDNA loss and mitochondrial dysfunction(PMID: 31036718).

## Storage

**Storage:**  
Store at -20°C. Stable for one year after shipment.  
**Storage Buffer:**  
PBS with 0.02% sodium azide and 50% glycerol pH 7.3.  
**Aliquoting is unnecessary for -20°C storage**

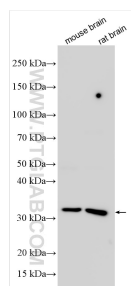
\*\*\* 20ul sizes contain 0.1% BSA

For technical support and original validation data for this product please contact:  
T: 1 (888) 4PTGLAB (1-888-478-4522) (toll free in USA), or 1(312) 455-8498 (outside USA)  
E: [proteintech@ptglab.com](mailto:proteintech@ptglab.com)  
W: [ptglab.com](http://ptglab.com)

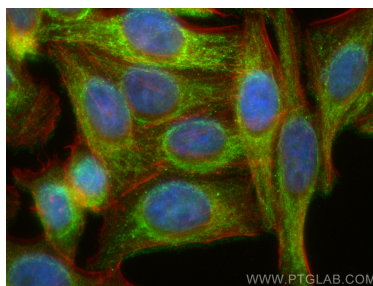
This product is exclusively available under Proteintech Group brand and is not available to purchase from any other manufacturer.



## Selected Validation Data



Various lysates were subjected to SDS PAGE followed by western blot with 26379-1-AP (SLC25A36 antibody) at dilution of 1:3000 incubated at room temperature for 1.5 hours.



Immunofluorescent analysis of (4% PFA) fixed HepG2 cells using SLC25A36 antibody (26379-1-AP) at dilution of 1:400 and Multi-Ab CoraLite® Plus 488-Goat Anti-Rabbit Recombinant Secondary Antibody (H+L) (RGAR002), CL594-phalloidin (red).