

For Research Use Only

GTF3C6 Polyclonal antibody

Catalog Number: 26382-1-AP



Basic Information

Catalog Number:

26382-1-AP

Size:

150ul , Concentration: 500 ug/ml by Nanodrop and 267 ug/ml by Bradford method using BSA as the standard;

Source:

Rabbit

Isotype:

IgG

Immunogen Catalog Number:

AG23895

GenBank Accession Number:

BC011593

GeneID (NCBI):

112495

UNIPROT ID:

Q969F1

Full Name:

general transcription factor IIIC, polypeptide 6, alpha 35kDa

Observed MW:

35-38 kDa

Purification Method:

Antigen affinity purification

Recommended Dilutions:

WB 1:1000-1:6000

IP 0.5-4.0 ug for 1.0-3.0 mg of total protein lysate

IHC 1:500-1:2000

Applications

Tested Applications:

WB, IHC, IP, ELISA

Species Specificity:

human, mouse

Note-IHC: suggested antigen retrieval with TE buffer pH 9.0; (*) Alternatively, antigen retrieval may be performed with citrate buffer pH 6.0

Positive Controls:

WB : HeLa cells, HepG2 cells, K-562 cells

IP : HepG2 cells,

IHC : human urothelial carcinoma tissue, human lung cancer tissue, mouse lung tissue

Storage

Storage:

Store at -20°C. Stable for one year after shipment.

Storage Buffer:

PBS with 0.02% sodium azide and 50% glycerol pH 7.3.

Aliquoting is unnecessary for -20°C storage

*** 20ul sizes contain 0.1% BSA

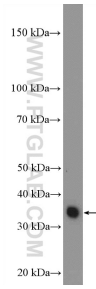
For technical support and original validation data for this product please contact:

T: 1 (888) 4PTGLAB (1-888-478-4522) (toll free in USA), or 1(312) 455-8498 (outside USA)

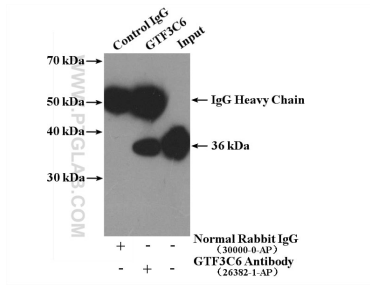
E: proteintech@ptglab.com
W: ptglab.com

This product is exclusively available under Proteintech Group brand and is not available to purchase from any other manufacturer.

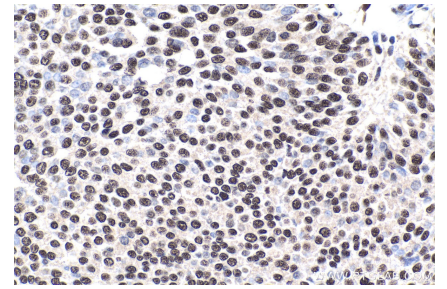
Selected Validation Data



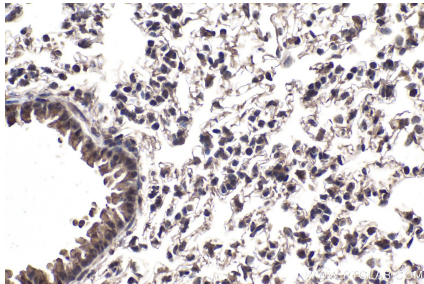
HeLa cells were subjected to SDS PAGE followed by western blot with 26382-1-AP (GTF3C6 Antibody) at dilution of 1:3000 incubated at room temperature for 1.5 hours.



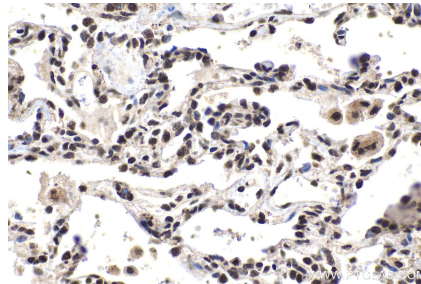
IP result of anti-GTF3C6 (IP:26382-1-AP, 4ug;
Detection:26382-1-AP 1:2000) with HepG2 cells
lysate 3600ug.



Immunohistochemical analysis of paraffin-embedded human urothelial carcinoma tissue slide using 26382-1-AP (GTF3C6 antibody) at dilution of 1:1000 (under 40x lens). Heat mediated antigen retrieval with Tris-EDTA buffer (pH 9.0).



Immunohistochemical analysis of paraffin-embedded mouse lung tissue slide using 26382-1-AP (GTF3C6 antibody) at dilution of 1:1000 (under 40x lens). Heat mediated antigen retrieval with Tris-EDTA buffer (pH 9.0).



Immunohistochemical analysis of paraffin-embedded human lung cancer tissue slide using 26382-1-AP (GTF3C6 antibody) at dilution of 1:1000 (under 40x lens). Heat mediated antigen retrieval with Tris-EDTA buffer (pH 9.0).