

For Research Use Only

# LRRC6 Polyclonal antibody

Catalog Number: 26400-1-AP



## Basic Information

<b>Catalog Number:</b> 26400-1-AP	<b>GenBank Accession Number:</b> BC047286	<b>Purification Method:</b> Antigen affinity purification
<b>Size:</b> 150ul , Concentration: 450 µg/ml by Nanodrop;	<b>GeneID (NCBI):</b> 23639	<b>Recommended Dilutions:</b> WB 1:500-1:1000 IF 1:200-1:800
<b>Source:</b> Rabbit	<b>Full Name:</b> leucine rich repeat containing 6	
<b>Isotype:</b> IgG	<b>Observed MW:</b> 48-55 kDa	
<b>Immunogen Catalog Number:</b> AG23367		

## Applications

<b>Tested Applications:</b> IF, WB, ELISA	<b>Positive Controls:</b>
<b>Species Specificity:</b> human, mouse	<b>WB :</b> mouse Lung tissue, mouse testis tissue <b>IF :</b> MDCK cells,

## Background Information

### Storage

**Storage:**  
Store at -20°C. Stable for one year after shipment.  
**Storage Buffer:**  
PBS with 0.02% sodium azide and 50% glycerol pH 7.3.  
Aliquoting is unnecessary for -20°C storage

\*\*\* 20ul sizes contain 0.1% BSA

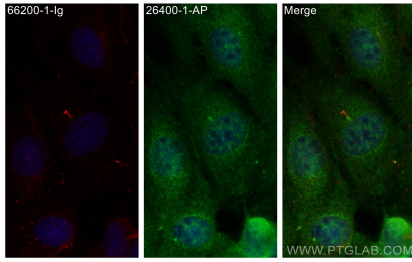
For technical support and original validation data for this product please contact:

T: 1 (888) 4PTGLAB (1-888-478-4522) (toll free in USA), or 1(312) 455-8498 (outside USA)

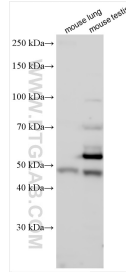
E: [proteintech@ptglab.com](mailto:proteintech@ptglab.com)  
W: [ptglab.com](http://ptglab.com)

This product is exclusively available under Proteintech Group brand and is not available to purchase from any other manufacturer.

## Selected Validation Data



Immunofluorescent analysis of (4% PFA) fixed MDCK cells using LRRC6 antibody (26400-1-AP) at dilution of 1:400 and CoraLite®488-Conjugated AffiniPure Goat Anti-Rabbit IgG(H+L), acetylated Tubulin(Lys40) antibody (66200-1-Ig, Clone: 7E5H8, red).



Various lysates were subjected to SDS PAGE followed by western blot with 26400-1-AP (LRRC6 antibody) at dilution of 1:500 incubated at room temperature for 1.5 hours.